

## Model 327

### 1 1/8" Micro-Display

Gauge , Compound and Absolute PSI and Bar Ranges



Setra's Model 327 Micro-Display is designed for use in high density modular block gas sticks and panels required for today's 300mm tools. With a footprint of 1-1/8", the Model 327 is ideal for in-line installation between the power supply and the pressure transducer.

The 327 is a low-power consumption device , which is calibrated to convert the transducer's 0-5 VDC, 0 to 10 VDC, or 4-20 mA output to a viewable 3-1/2" digit display. The back-lit Liquid Crystal Display (LCD) makes reading the display even easier.

A choice of electrical connector combinations are available. They include 9 pin D-Sub or high-density 15 pin D-Sub Bayonet connectors for electrical connection to the transducer and the power supply.

The front face of the 327 rotates 360° degrees for viewing in any of four orientations. Detents ensure proper positioning in each axis. Front access to the multi-turn zero and span potentiometers, switchable PSI and kPa pressure units, and pressure ranges from 10 PSI to 200 PSI full scale complete this unique design.

When coupled with Setra's Model 227, 1-1/8" down-mount pressure transducer, this package provides the ultimate in pressure measurement and display. The 327 may also be used with a variety of other Setra Ultra-High Purity products as well, including Models 217, 223 and 224.

#### Pressure Ranges

(Non-switchable Engineering Units)

PSI	Bar
25.0	1.70
50.0	3.40
100.0	7.00
250	17.0
500	34.0
1000	70.0
3.00 Kpsi	210

#### Pressure Ranges

Switchable Engineering Units  
PSI Ranges with kPa Equivalent

PSI	kPa
0 to 25.0	0 to 172
0 to 50.0	0 to 345
0 to 100.0	0 to 689

NOTE: Setra quality standards are based on ANSI-Z540-1. The calibration of this product is NIST traceable. U.S. Patent nos.

## Applications

- Modular 1 1/8" Block Gas Sticks and Panels
- High Purity Gas Delivery Systems
- Semiconductor Process Tools

## Benefits

- Rotatable Face for 360° Viewing
- Switchable Engineering Units on Lower Full Scale Ranges
- Recessed Mating Connector to Reduce Potential Interference
- Meets CE Conformance Standards

*When it comes to a product to rely on - choose the Model 327. When it comes to a company to trust - choose Setra.*



Visit Setra Online:  
<http://www.setra.com>

**setra**

**800-257-3872**

# Model 327 Specifications

## Display

Digits	-1XXX to 1XXX
Type	7 Segment LCD, Yellow Backlight
Polarity	Automatic (-) Display
Overload	1 Followed by Blank Display
Accuracy	0.25% of Reading, ±1 Count
Size	0.22" High Characters

## Mechanical

Electrical Termination	High Density 15-pin Sub-D or 9 Pin Sub-D
Orientation	Any of Four Axis

## Environmental

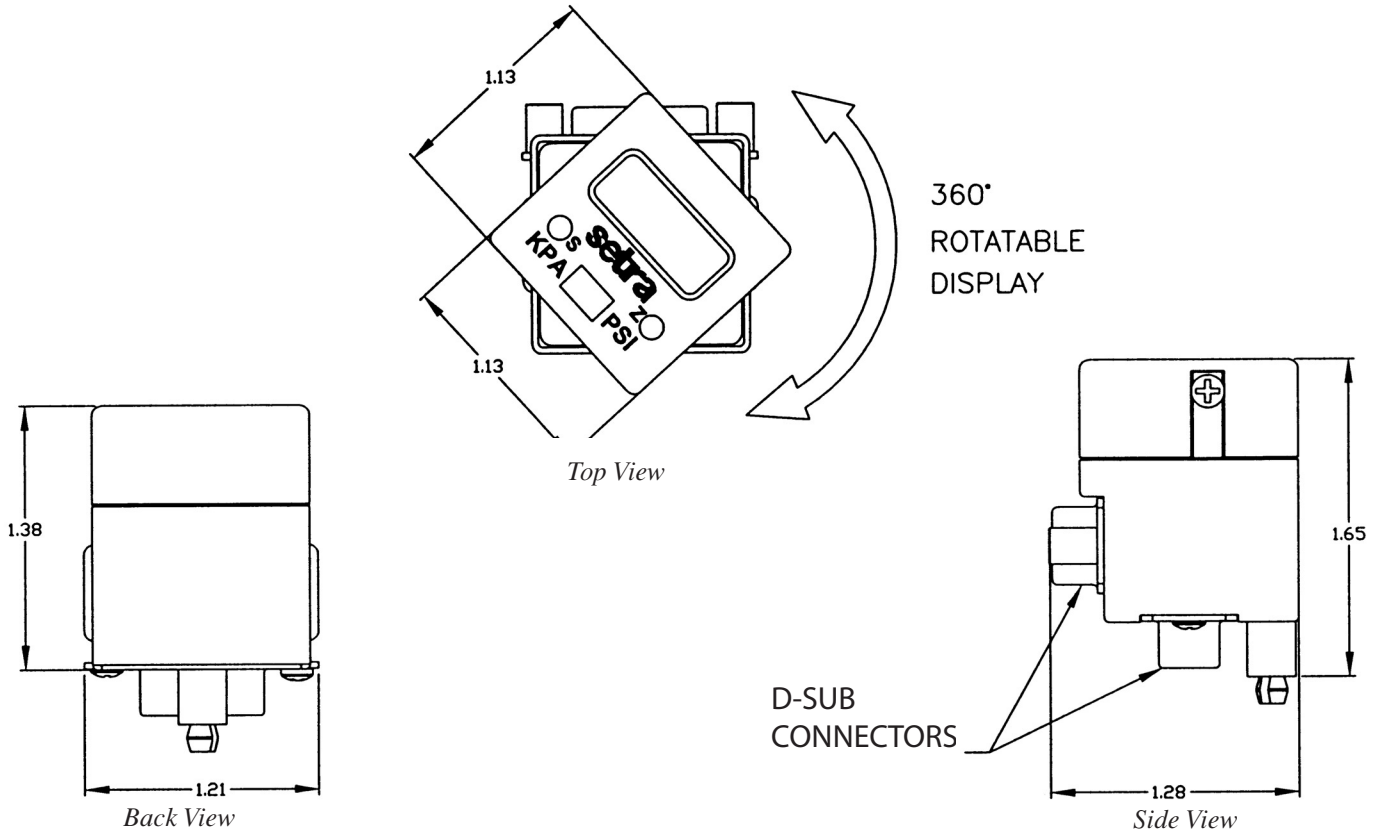
Temperature	
Operating °F (°C)	+32 to +140 (0 to +60)
Storage °F (°C)	-40 to +158 (-40 to +70)

## Electrical Data

Input Signal	0 to 5, 0 to 10 VDC or 4-20mA
Excitation	12 to 30 VDC ( 4 VDC Drop on Current loop)
Zero/Span	Multi-turn Potentiometers on Front Face
Protection	Reverse Polarity Protection ( 100mA Current Limit)

Specifications subject to change without notice.

## Outline Drawings



## ORDERING INFORMATION

Code all blocks in table.

**Example:** Part No. 3271M1GDDNS is a Model 327, 0 to 5 VDC Input, 25 PSI Range, Gauge Pressure 15-pin D-sub, Rear Mount, 15-pin D-sub, Bottom Mount, with Switchable Engineering Units

3	2	7	1	—	□	—	□	—	□	—	□	—	□	—	□	—	□	*	
<b>Model</b>				<b>Input</b>		<b>Pressure Range</b>		<b>Pressure</b>		<b>Electrical Connection to Transducer</b>		<b>Electrical Connection to Power Supply</b>		<b>Options</b>					
3271 = 327				M = 0 to 5 VDC L = 0 to 10 VDC B = 4 to 20 mA		<b>PSI Range</b> 1 = 25.0* 2 = 50.0* 3 = 100.0* 4 = 250.0 5 = 500.0 6 = 1000.0 7 = 3.00 Kpsi		<b>Bar Range</b> A = 1.70 B = 3.40 C = 7.00 D = 17.0 E = 34.0 F = 70.0 G = 210		<b>G</b> = Gauge <b>C</b> = Compound <b>A</b> = Absolute		<b>D</b> = 15 pin D-sub Bayonet Connector, Rear Mount <b>E</b> = 9 Pin D-sub Bayonet Connector, Rear Mount		<b>D</b> = 15-pin D-sub Bayonet Connector, Bottom Mount <b>E</b> = 9-Pin D-sub Bayonet Connector, Bottom Mount		<b>NS</b> = Switchable Engineering Units *Leave blocks blank when ordering pressure range with non-switchable engineering units.			
* Pressure Range Available in Switchable Engineering Units (PSI with kPa Equivalent). Order with Option NS.																			

Please contact factory for versions not shown.