



INSTRUMENTS, LLC
Direct Drive Difference

AIR CONDITIONING / REFRIGERATION SERIES 2510X GAUGES

- Accuracy: 0.5% of span @ Midscale, 1% Overall (Pressure readings)
1% of span from 0 to 20" Hg, 2% from 21" to 30" Hg (Vacuum readings)
- Size: 2 1/2", 4 1/2" and 6" Dial Sizes
- Case: ABS Cyclac
SSTL available on 2 1/2" and 4 1/2"
- Fitting: 316 SSTL 1/4" or 1/2" NPT Male
- Helical Bourdon Tube: Inconel X-750
- Connecting Material: Nickel Braze. Suitable for Ammonia use.

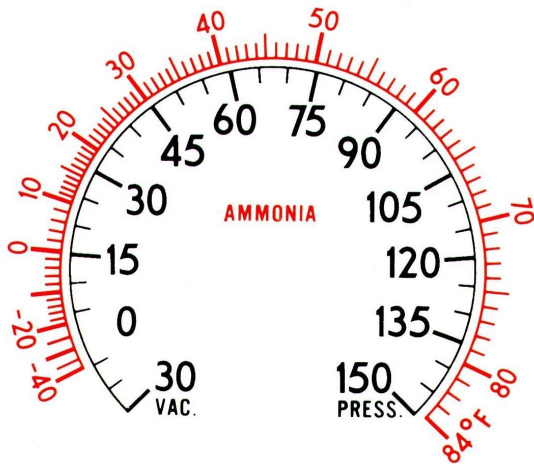
Ammonia Refrigerant Gauge for service such as Ammonia Compressors.

Gauges have Temperature Equivalent scales in Red.

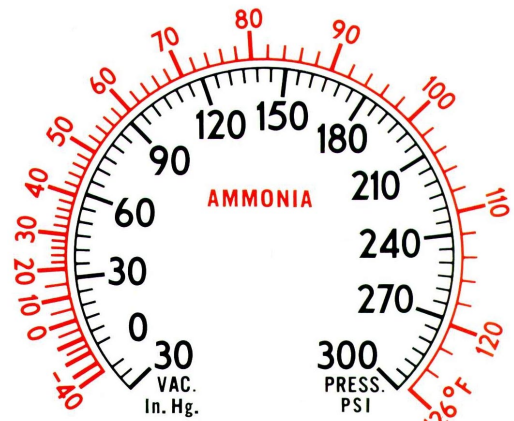
Provides easy analysis of refrigeration systems.

All 3D Direct Drive Pressure Gauges are suitable for Ammonia use.

30" Hg Vacuum to 0 to 150 PSI
Part Number Example: 25104-24B11DRA



30" Hg Vacuum to 0 to 300 PSI
Part Number Example: 25104-26B11DRA

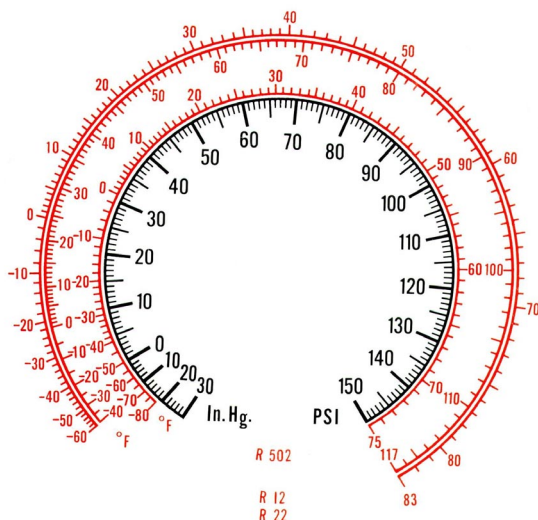


Refrigerant Gauge for equipment utilizing R-12, R-22 or R-502 refrigerants.

Gauges have Temperature Equivalent scales in Red.

Provides easy analysis of refrigeration systems.

30" Hg Vacuum to 0 to 150 PSI
Part Number Example: 25104-24B11DRB



30" Hg Vacuum to 0 to 300 PSI
Part Number Example: 25104-26B11DRB

