

Product Quick Reference Card

Device Maintenance

Battery Replacement

The Cryo-Temp must be returned to the factory for battery replacement.

Battery Warning

WARNING: FIRE, EXPLOSION, AND SEVERE BURN HAZARD. DO NOT SHORT CIRCUIT, CHARGE, FORCE OVER DISCHARGE, DISASSEMBLE, CRUSH, PENETRATE OR INCINERATE. BATTERY MAY LEAK OR EXPLODE IF HEATED ABOVE 80°C (176°F).

Recalibration

The Cryo-Temp standard calibration is one point at 25°C.

Pricing:

Recalibration traceable to NIST \$60.00
Recalibration \$40.00

Additional:

As Found Data \$15.00 per parameter/channel
Verification Point \$15.00 per point

To send the devices back, visit www.madgetech.com, select Services then RMA Process.



Part Number	Cryo-Temp
Temperature Sensor	Thermistor
Temperature Range	-86 to +35°C
Temperature Resolution	0.1°C
Calibrated Accuracy	±1.0°C
Memory	32,767
Sample Rate	5 seconds up to 30 minutes
Required Interface Package	IFC300
Baud Rate	38,400
Typical Battery Life	2 years @ +25°C, 1 year at -80°C
Operating Environment	-86 to +35°C, 0 to 100%RH
Submergible	Splash Resistant (IP65)
Material	ABS plastic
Dimensions	3.3" x 2.1" x 0.4" (83mm x 54mm x 11mm)
Approvals	CE

Specifications subject to change.

See MadgeTech's terms and conditions at www.madgetech.com

MadgeTech, Inc.

PO Box 50 • Warner, NH 03278
Phone 603.456.2011 • Fax 603.456.2012
www.madgetech.com • info@madgetech.com

REV F 2010.02.03

Product Information Card

Cryo-Temp



Cryo-Temp

Ultra Low Temperature Recorder



To view the full MadgeTech product line, visit our website at www.madgetech.com.

Product Notes

Manual Start

When the **Manual Start** method is selected, the data logger will be armed, but not recording. To start the device, hold the magnetic wand (found on the IFC300) over the start mark, the green LED will blink 5 times, followed by the warn and alert LED's. The green LED will continue to blink to indicate the device is logging.

Marking Feature

A date and time stamp may be placed in the recorded data with the magnetic switch. The marking feature may be configured to clear the alarm / warn indicators.

Submergibility

The Cryo-Temp is splash resistant, rated IP64.

LEDs

Green: Blinks to indicate safe conditions during acquisition.

Yellow: Blinks to indicate warn limits have been exceeded.

Red: Blinks to indicate alarm criteria (limits/delay) have been exceeded

Alarm Settings

To change the settings for the temperature alarm;

- Select **Alarm Settings** from the **Device Menu** in the MadgeTech Software. A window will appear allowing the customer to set the high and low temperature alarms and warning alarms.
- Press **Change** to edit the values.
- Check **Enable Alarm Settings** to enable the feature and check each high and low, warn and alarm box to activate it. The values can be entered in the field manually or by using the scroll bars.
- Click **Save** to save the changes. To clean an active alarm or warn, press the **Clear Alarm** or **Clear Warn** button.
- To set an alarm delay, enter the duration of time into the **Alarm Delay** box in which the readings can be outside of the alarm parameters.

Password Protection

An optional password may be programmed into the device to restrict access to configuration options.

Installation Guide

Installing the Interface cable

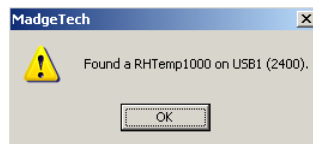
- IFC200, IFC202 or IFC300
Refer to the "Quick Start Guide" included in the package.
- IFC110, IFC102 or IFC103
Plug the serial cable into the port and verify it is secure.
- USB-1 or USB-101
Install the USB drivers from the CD provided in the kit, than plug the USB cable into the computer and the serial cable into the serial port.

Installing the software

Insert the Software CD in the CD-ROM Drive. If the autorun does not appear, locate the drive on the computer and double click on **Autorun.exe**. Follow the instructions provided in the Wizard.

Connecting the data logger

- Once the software is installed and running, plug the interface cable into the data logger.
- Click the **Communication Menu**, then **Auto Configure Port**.
- After a moment, a box similar to the following will appear;



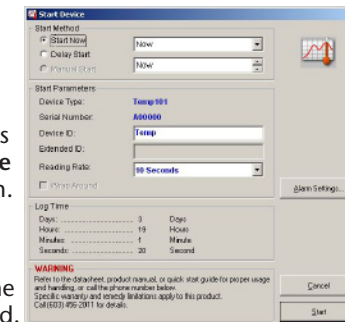
- Click **OK**. The **Device Status** box will appear. Click **OK**.
- At this point, communications have been configured for your logger. These settings can be found under the **Communication Menu**.

Note: For additional installation instructions refer to your "Data Logger & Software Operating Manual".

Device Operation

Starting the data logger

- Click **Device Menu** then **Start Device**.
- Choose the desired start method.
- Choose the start parameters by selecting a **Reading Rate** suitable for your application.
- Enter in any other desired parameters and click **Start**.
- A box will appear stating the data logger has been started. Click **OK**.



- Disconnect the data logger from the interface cable and place it in the environment to measure.

Note: The device will stop recording data when the end of memory is reached or the device is stopped. At this point the device cannot be restarted until it has been re-armed by the computer.

Downloading data from a data logger

- Connect the data logger to the interface cable.
- Click the **Device Menu** then **Read Device Data**. This will offload all recorded data onto the PC.

Technical Support

Visit www.madgetech.com, or call (603) 456-2011. Technical support is also available by e-mailing support@madgetech.com

Additional product information is available by e-mailing info@madgetech.com.