

Product Quick Reference Card

Device Maintenance

Battery Replacement

The HiTemp150FP must be returned to the factory for battery replacement.

Battery Warning

WARNING: FIRE, EXPLOSION, AND SEVERE BURN HAZARD. DO NOT SHORT CIRCUIT, CHARGE, FORCE OVER DISCHARGE, DISASSEMBLE, CRUSH, PENETRATE OR INCINERATE. BATTERY MAY LEAK OR EXPLODE IF HEATED ABOVE 150°C (302°F).

Recalibration

The HiTemp150FP standard calibration is two points at 50°C and 150°C.

Pricing:

Recalibration traceable to NIST \$60.00
Recalibration \$40.00

Additional:

As Found Data \$15.00 per parameter/channel
Verification Point \$15.00 per point

To send the devices back, visit www.madgetech.com, select Services then RMA Process.



Specification	HiTemp150FP
Temperature Sensor	100Ω Platinum RTD
Temperature Range	-40 to +150°C
Temperature Resolution	0.05°C
Calibrated Accuracy	±0.5°C (over 100°C span)
Memory	32,767 readings
Sample Rate	1 second up to 12 hours
Required Interface Package	IFC110 or IFC200
Baud Rate	2,400
Typical Battery Life	1 year
Operating Environment	-40 to +150°C, 0 to 95% RH non-condensing
Material	Body and Probe: 316 Stainless Steel Cable: Teflon
Dimensions	Body: 1.1" x 1.75" dia. (28mm x 45mm dia.) Probe: 4" X 1/8" dia. (102mm x 4mm dia.)
Approvals	CE

Product Information Card

HiTemp150FP



HiTemp150FP

Extended Range Temperature Recorder with Flexible Probe

*Specifications subject to change.
See MadgeTech's terms and conditions at www.madgetech.com*

MadgeTech, Inc.

PO Box 50 • Warner, NH 03278
Phone 603.456.2011 • Fax 603.456.2012
www.madgetech.com • info@madgetech.com

REV F 2010.09.14



To view the full MadgeTech product line,
visit our website at www.madgetech.com.

Product Notes

O-Rings

O-ring maintenance is a key factor when properly caring for the HiTemp150FP. The o-rings ensure a tight seal and prevent liquid from entering the inside of the device.

Please refer to the app note "O-Rings 101: Protecting Your Data", found on the MadgeTech website, for information on how to prevent O-ring failure.

Note: This product is rated for use up to 150°C. Please heed the battery warning. The product will explode if exposed to temperatures above 150°C.

Installation Guide

Installing the Interface cable

- IFC200, IFC202 or IFC300
Refer to the "Quick Start Guide" included in the package.
- IFC110, IFC102 or IFC103
Plug the serial cable into the port and verify it is secure.
- USB-1 or USB-101
Install the USB drivers from the CD provided in the kit, then plug the USB cable into the computer and the serial cable into the serial port.

Installing the software

Insert the Software CD in the CD-ROM Drive. If the autorun does not appear, locate the drive on the computer and double click on **Autorun.exe**. Follow the instructions provided in the Wizard.

Connecting the data logger

- Once the software is installed and running, plug the interface cable into the data logger.
- Click the **Communication Menu**, then **Auto Configure Port**.
- After a moment, a box similar to the following will appear;



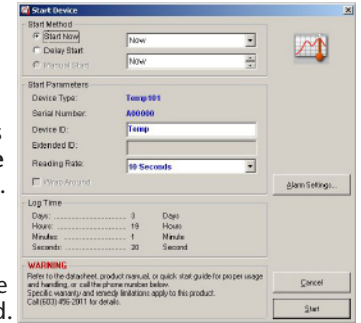
- Click **OK**. The **Device Status** box will appear. Click **OK**.
- At this point, communications have been configured for your logger. These settings can be found under the **Communication Menu**.

Note: For additional installation instructions refer to your "Data Logger & Software Operating Manual".

Device Operation

Starting the data logger

- Click **Device Menu** then **Start Device**.
- Choose the desired start method.
- Choose the start parameters by selecting a **Reading Rate** suitable for your application.
- Enter in any other desired parameters and click **Start**.
- A box will appear stating the data logger has been started. Click **OK**.



- Disconnect the data logger from the interface cable and place it in the environment to measure.

Note: The device will stop recording data when the end of memory is reached or the device is stopped. At this point the device cannot be restarted until it has been re-armed by the computer.

Downloading data from a data logger

- Connect the data logger to the interface cable.
- Click the **Device Menu** then **Read Device Data**. This will offload all recorded data onto the PC.

Technical Support

Visit www.madgetech.com, or call (603) 456-2011. Technical support is also available by e-mailing support@madgetech.com

Additional product information is available by e-mailing info@madgetech.com.