

Installation and Operation Manual



Precision Turbine Flowmeters...



SPONSLER, INC.

Flow Measuring Devices and Controls

IDEX

IDEX CORPORATION

A Unit of IDEX Corporation

2363 Sandifer Blvd.
Westminster, SC 29693

(864) 647-2065

fax: (864) 647-1255

sales@sponsler.com

www.sponsler.com

TABLE OF CONTENTS

PAGE #	DESCRIPTION
1	Forward
2	Pre-Installation Inspection, Installation
3	Installation (continued)
4	3 Typical Meter Runs
5	Typical Flowstraightener Section
6	FIGURE 1: 1/4" Assembly Procedure
7	FIGURE 2: 1/2" and Larger Assembly Procedure
8	FIGURE 3: MF20-90 Assembly Procedure
9	FIGURE 4: MF100-175 Assembly Procedure
10	FIGURE 5: Corrosive Meter Assembly Procedure

A. PRINCIPLE OF OPERATION

1. The precision turbine flowmeter is a volumetric flow measuring device.
2. The flowing fluid engages the vaned rotor causing it to rotate at an angular velocity proportional to the flowrate.
3. The angular velocity of the rotor results in the generation of an electrical signal (AC sine wave type). Summation of the pulsing electrical signal relates directly to the flow rate.
4. The differential pressures developed across the turbine flowmeter balances out normal downstream thrust loads, thus eliminating the need for thrust bearings over the rated range of the meter.
5. The vaned rotor is the only moving part of the flowmeter.

B. PHYSICAL DESCRIPTION

Refer to Assembly procedures in this manual for the identification of major parts of a typical SPONSLER PRECISION TURBINE FLOWMETER.

C. ELECTRICAL DESCRIPTION

The pickup coil furnished with each SPONSLER PRECISION TURBINE FLOWMETER is a sensing device that converts the change of magnetic flux from a permanent magnet, produced by the revolving rotor, into an AC sine wave. Signal amplitude and frequency are directly proportional to flow rate.

1. Pickup Coil Types-
 - (a) Variable Reluctance- Generating pickups contain a permanent magnet and associated wire-wound coil. The movement of the ferrous material of the rotor blade past the coil tip disrupts a magnetic field producing an AC signal within the coil winding.
 - (b) Inductance-Generating pickups contain a wire-wound coil suitably fixed within a hermetically sealed housing. The movement of a permanent magnet embedded in a rotor produces an AC signal within the coil winding.
2. Pickup Coil Output- The generated AC sinewave is transmitted via 2 wire shielded cable that minimizes external interference.
3. Your Pickup Coil- Has been selected to best suit your particular application. The reluctance coil provides the highest full scale frequency and a lesser signal/noise ratio. The inductance coil has a higher signal/noise ratio and a lower full scale frequency.

PRE-INSTALLATION INSPECTION

Your SPONSLER PRECISION TURBINE FLOWMETER is a measuring instrument capable of providing you with high precision performance over a long period. It should be treated with care and not subjected to rough handling.

1. Unpack carefully and verify the information contained on the packing slip for proper MODEL Number, SERIAL Number, and CALIBRATION Data.
2. Remove the instrument from the plastic packaging and remove the endfitting protectors from the flowmeter housing.
3. Visually inspect the entire unit. Any visible damage should be reported to the manufacturer immediately.
4. Replace the endfitting protectors and return the Flowmeter to its plastic packaging. The unit may thus be stored indefinitely until installation.

INSTALLATION

A. GENERAL PROCEDURE

1. Meter Position- FLOWMETERS are normally calibrated in a horizontal attitude. Best correlation of calibration, therefore, occurs when installed and operated in this position. Meters may, however, be operated satisfactorily in any position.
2. Flow Direction- ALL SPONSLER PRECISION TURBINE FLOWMETERS are marked "IN" and "OUT" and have an arrow to indicate the proper direction of the flow. (Bi-Directional flowmeters excluded)
3. Meter Location-
 - A. Relative- When it is expected that flow will be intermittent, the meter should not be mounted at a low point in the piping system. Solids that settle or congeal in the meter may affect the meter's performance.
 - B. Tolerance to Mechanical Vibration- Although the SPONSLER PRECISION TURBINE FLOWMETER is designed for rugged service, the meter life may be increased by location in a minimum vibration area.
 - C. Tolerance to Electrical Interference- In order to achieve optimum electrical signal output from the flowmeter, consideration must be given to its isolation from ambient electrical interference such as nearby motors, transformers, and solenoids. (Section IV Maintenance Electrical)
4. System Pressure-
 - A. Minimum Operation Pressure- A minimum operating pressure should be maintained to preclude a change in the calibration factor due to various types of two phase phenomena. The minimum operating pressure is a function of the vapor pressure of the fluid and the presence of other dissolved gases. Maintenance of the system back pressure serves to avoid cavitation or fluid separation.

Calculation of the back pressure is by the following formula:

$$BP = (\text{meter } \Delta P \times 2) + (VP \times 1.25)$$

Where:

BP = Back pressure required

ΔP = Flowmeter pressure drop @ maximum flow

VP = Product vapor pressure at maximum temperature (psig)

- B. Maximum Meter Pressure- Safe working pressure for the flowmeter is determined by the size and type of connecting fittings used and the materials of construction. Consult the factory for specifications for your particular model.

B. PIPING

1. General Piping Considerations- As explained in the FORWARD, the fluid moving through the flowmeter engages the angled blades of the turbine rotor. Thus the rotational velocity of the rotor is a function of the fluid velocity and the blade angle engagement. Swirl present in the fluid ahead of the meter can change the effective angle of engagement and, therefore, cause a deviation from the supplied calibration (done under controlled flow conditions). Proper installation of the Flowmeter minimizes the harmful effects of fluid swirl.
2. The Meter Location- That section of the pipe immediately preceding, including, and following the flowmeter is known as "THE METERING LOCATION". Three typical metering arrangements are described in the following section of this manual. Each is designed to minimize fluid swirl. A flowstraightener is also shown and should be used where installation does not allow the otherwise straight run of pipe upstream of the meter. PLEASE NOTE: The required lengths of pipe are given in pipe diameters and represent the minimum distances between piping components that are recommended to eliminate flow disturbances.
3. Meter-By-Pass- Where possible, such as in a new piping system, it is advisable to include a valved by-pass around the flowmeter. However, the by-pass connections are not to be placed within the recommended metering run.
4. Line Purge- In a newly installed piping system or one in which fittings have been disturbed, the line should be flushed thoroughly prior to installing the instrument to minimize possible damage to the flowmeter from foreign materials.

C. ELECTRICAL CONNECTION

The standard SPONSLER PRECISION TURBINE FLOWMETER pickup coil is designed to mate with an MS310610SL-4S connector. A two-wire shielded cable should be used to lead from the connector to the electronic instrument in use. The cable shield is connected (grounded) to the appropriate connector on the display unit ONLY, in order to minimize ground-loop and interface difficulties. The connection cable should be located away from power lines whenever possible.

Precautions should be taken when removing or installing the pickup coil. Any physical damage such as bent threads or twisted leads are not covered by SPONSLER CO., INC warranty.

D. ASSEMBLY NOTES

1. Removal of internals should be performed in a clean area.
2. Ensure that internals are clean and dry before reassembling.

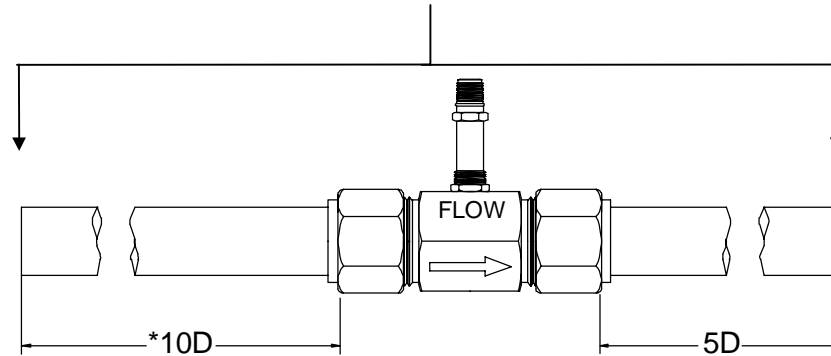
3 TYPICAL METERING RUNS

METERING LOCATION

UPSTREAM

Pipe fitting immediately preceding metering location

Wide open valve (gate or plug)
or
Sharp right angle bend (mitered elbow)
or
straight run of pipe

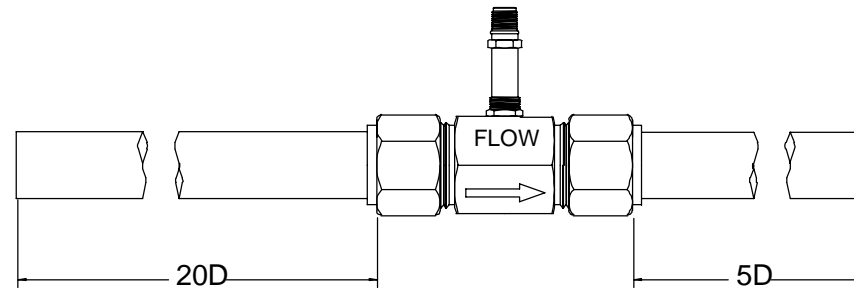


DOWNSTREAM

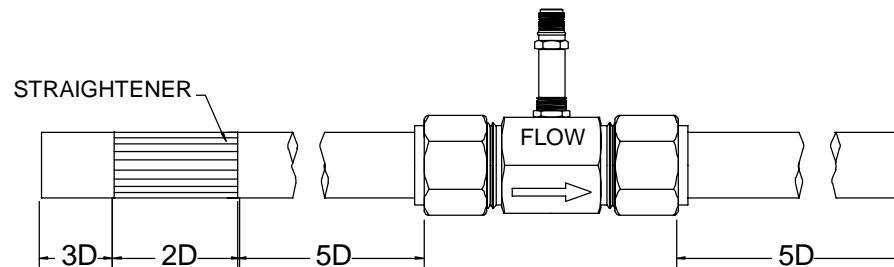
Pipe fitting immediately following metering location.

Any fitting, valve or pipe run

Long radius bends
or
smooth elbows
or
two elbows
or
partially open valves
of any type



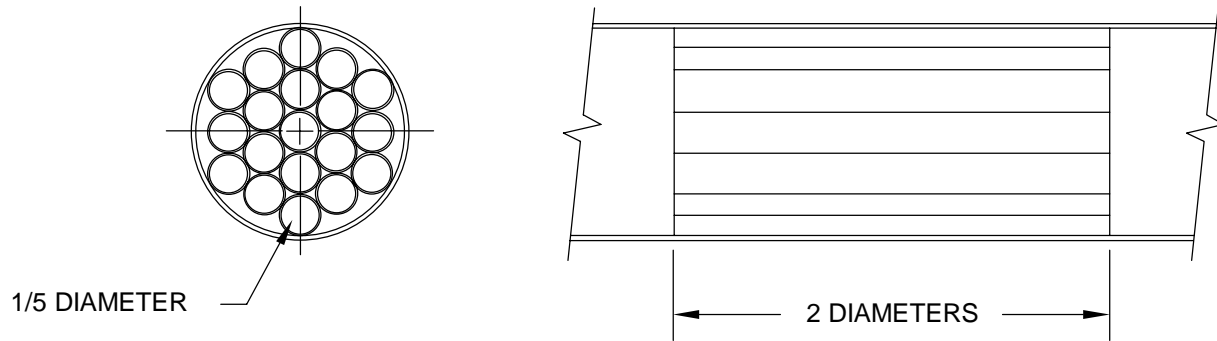
Any fitting, valve or pipe run



*Minimum lengths of straight pipe required expressed in nominal pipe diameters.

TYPICAL FLOWSTRAIGHTENER SECTION

Pg.5

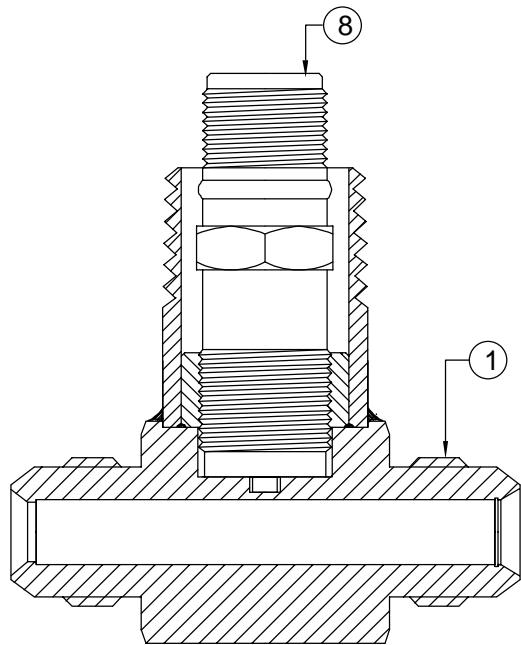


Flowstraightener- A full cluster of thin wall tubes fixed within a section of pipe.

The length of the internal tubes is equal to 2 diameters of outer pipe.

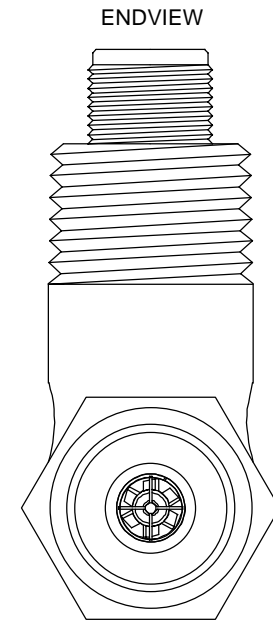
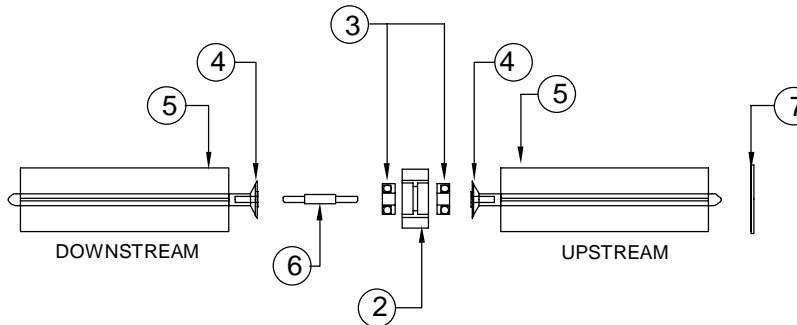
The diameter of internal tubes is equal to approximately $1/5$ the inside diameter of outer pipe. This requires 18 to 20 such tubes.

FIGURE 1: 1/4" PRECISION TURBINE FLOWMETER



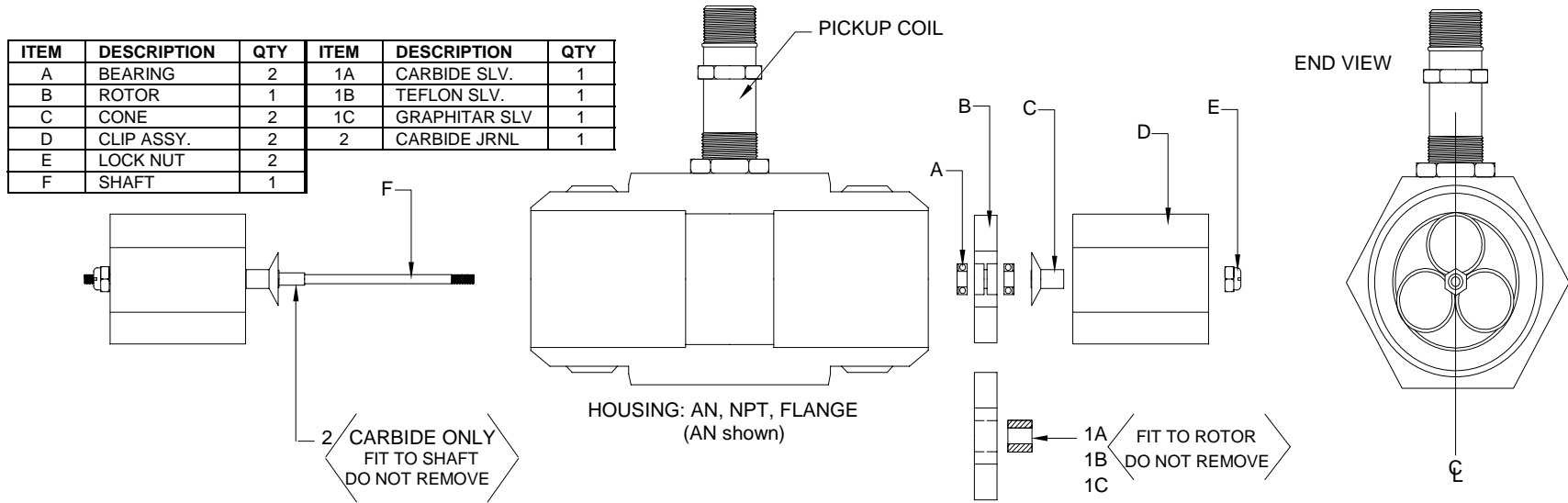
HOUSING: AN, NPT, FLANGED

ITEM	DESCRIPTION	QTY
1	HOUSING	1
2	ROTOR	1
3	BEARING	2
4	CONE	2
5	HANGER	2
6	SHAFT	1
7	RETAINING RING	1
8	PICKUP COIL	1



DISASSEMBLY FOR 1/4" METERS	REASSEMBLY FOR 1/4" METERS
<ol style="list-style-type: none"> 1. Remove retaining ring; Lift out carefully by placing a small flathead screw driver under the radius notch. 2. Remove internals from housing. 3. Review all parts for damage. STOP: If any part appears damaged DO NOT REASSEMBLE call factory for instructions. 4. Clean parts thoroughly before reassembling. 	<p>NOTE: Internals must go back together the exact way that they come out.</p> <ol style="list-style-type: none"> 1. Insert cones in hangers, and bearings in rotor. 2. Assemble internals as illustrated. 3. Slide internals in housing, (position hangers as illustrated in endview). 4. Install retaining ring - Make sure it seats in groove. 5. Observe that hangers do not turn. 6. Observe that rotor spins freely.

FIGURE 2: 1/2" & LARGER PRECISION TURBINE FLOWMETER



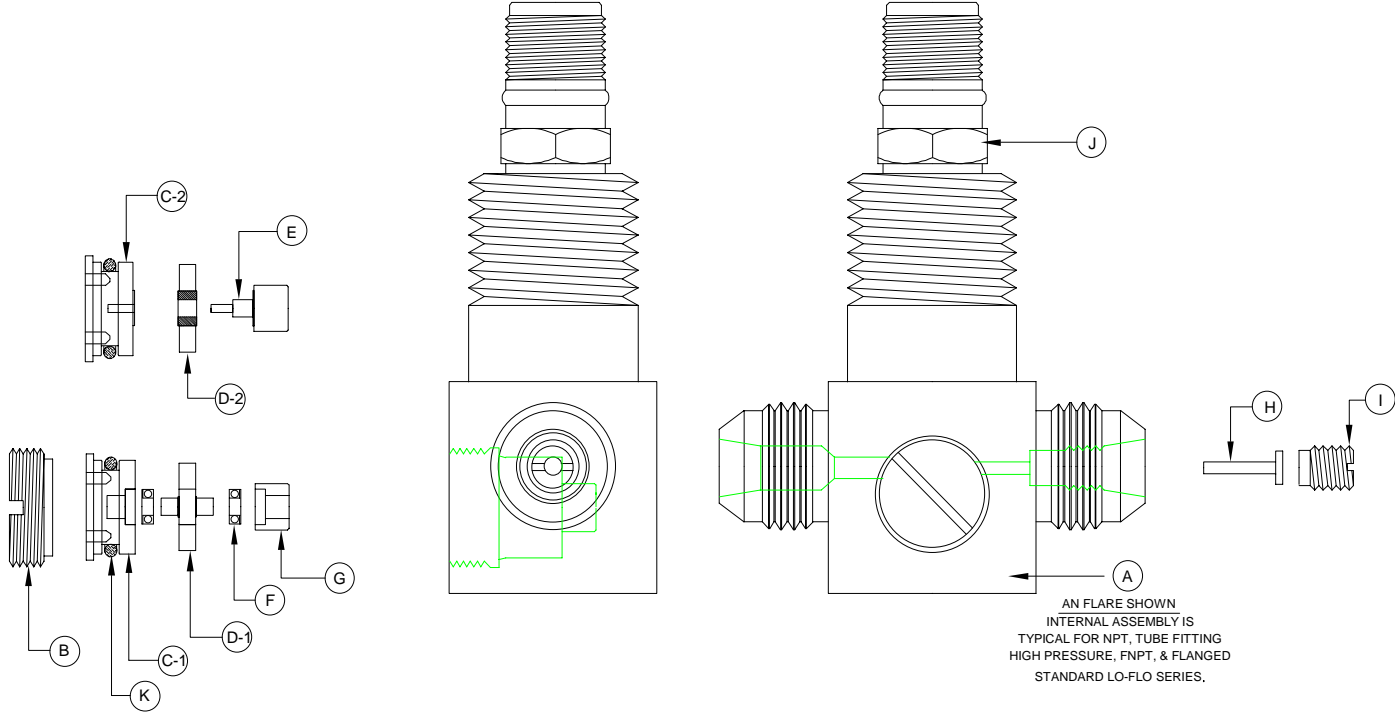
DISASSEMBLY FOR 1/2" AND LARGER METERS		REASSEMBLY FOR 1/2" AND LARGER METERS	
FOR BALL BEARING	FOR SLEEVED BEARING	FOR BALL BEARING	FOR SLEEVED BEARING
<ol style="list-style-type: none"> 1. Remove lock nut from shaft end marked "IN". 2. Insert extraction hook into "IN" clip assembly and extract with a parallel pulling motion. 3. Remove cone, bearings and rotor. 4. Remove "OUT" clip assembly with extraction hook as directed in step 2. DO NOT remove lock nut. Leave clip, cone, shaft and nut assembled. (Refer to diagram) 	<p>Before beginning: Assembly must go back together the exact way it comes out.</p> <ol style="list-style-type: none"> 1. Remove lock nut from shaft end marked "IN". 2. Insert extraction hook into "IN" clip assembly and extract with a parallel pulling motion. 3. Remove cone and rotor. DO NOT attempt to remove bearing from rotor. 4. Remove "OUT" clip assembly with extraction hook as directed in step 2. DO NOT remove lock nut. Leave clip, cone, shaft and nut assembled. (Refer to diagram) 	<p>NOTE: If any part appears damaged "DO NOT REASSEMBLE". Call factory for instructions</p> <ol style="list-style-type: none"> 1. Place meter on table vertically, "OUT" side upward. 2. Insert "OUT" clip/cone/shaft/nut assembly into housing as illustrated in endview diagram, push down as far as it will go (seating against step in housing) Clip bundle diameter may need to be clamped for easier insertion. 3. Flip meter around and insert bearing, rotor, bearing, then cone. Be sure the "IN" marking on the rotor coincides with the "IN" marking on the housing. 4. Insert "IN" clip assembly. 5. Screw on lock nut snug against "IN" clip assembly. DO NOT OVER TIGHTEN. 	<p>NOTE: If any part appears damaged DO NOT REASSEMBLE. Call factory for instructions</p> <ol style="list-style-type: none"> 1. Place meter on table vertically, "OUT" side upward. 2. Insert "OUT" clip/cone/shaft/nut assembly into housing as illustrated in endview diagram, push down as far as it will go (seating against step in housing) Clip bundle diameter may need to be clamped for easier insertion. 3. Flip meter around and insert rotor with bearing, then cone. Be sure the "IN" marking on the rotor coincides with the "IN" marking on the housing. 4. Insert "IN" clip assembly. 5. Screw on lock nut snug against "IN" clip assembly. DO NOT OVER TIGHTEN.

FIGURE 3: MF20-90 LO-FLO SERIES FLOWMETER

SLEEVED BEARING INTERNALS		
This assembly references all Model Numbers with Graphitar (GS), Teflon (TS), Carbide (CS), and Fluorosint (FS) sleeved bearing designators		
DESIGNATOR	DESCRIPTION	QTY
A	HOUSING	1
B	SCREW PLUG	1
C-2	RETAINER	1
D-2	ROTOR/BEARING ASSY.	1
E	SHAFT	1
H	ORIFICE	1
I	ORIFICE LOCK SCREW	1
J	PICKUP COIL	1
K	O-RING****	1

BALL BEARING INTERNALS		
This assembly references all Model Numbers with Teflon Ball (TB), Metal Ball (MB) and Cryo Ball (CB) bearing designators.		
DESIGNATOR	DESCRIPTION	QTY
A	HOUSING	1
B	SCREW PLUG	1
C-1	RETAINER	1
D-1	ROTOR/SHAFT ASSY.	1
F	BEARING	2
G	BEARING CUP	1
H	ORIFICE	1
I	ORIFICE LOCK SCREW	1
J	PICKUP COIL	1
K	O-RING****	1

**** CONSULT FACTORY FOR O-RING MATERIALS AND INSTALLATION



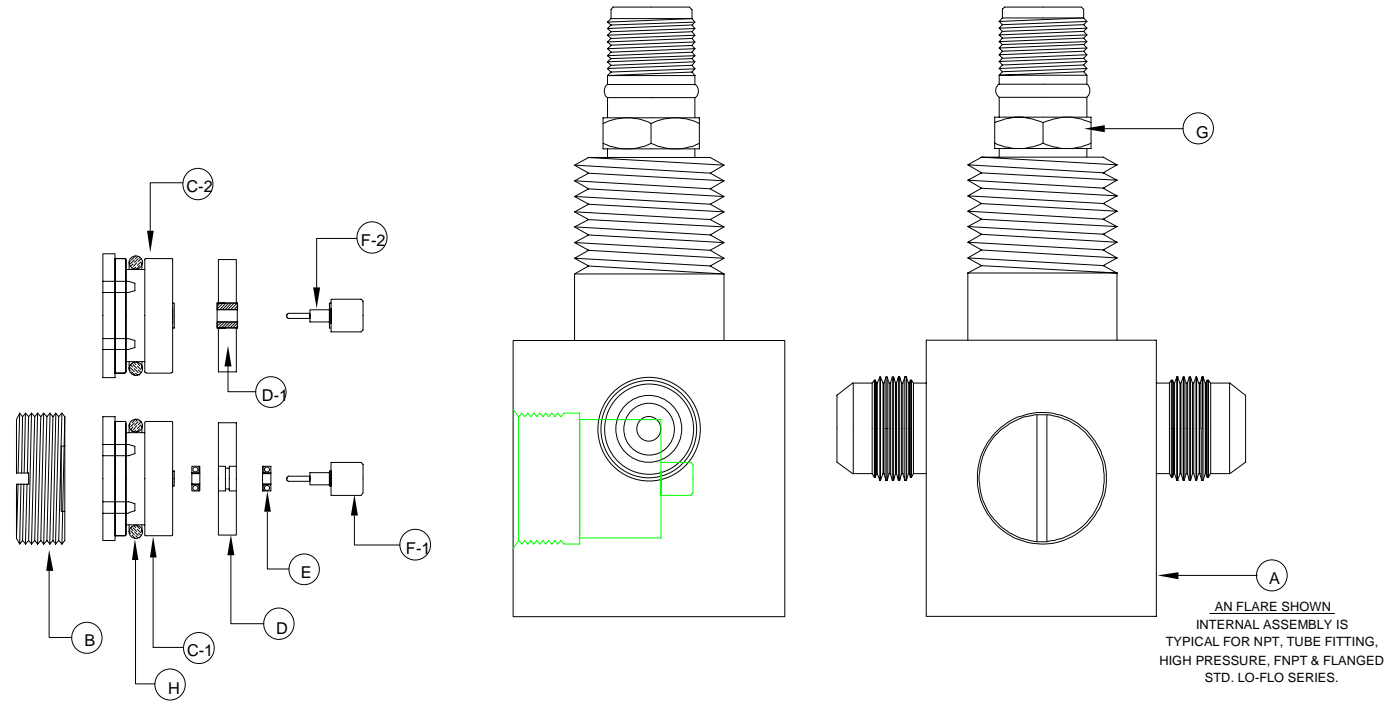
DISASSEMBLY PROCEDURE		REASSEMBLY PROCEDURE	
FOR BALL BEARING	FOR SLEEVED BEARING	FOR BALL BEARING	FOR SLEEVED BEARING
<ol style="list-style-type: none"> 1. With a large screw driver, remove screw plug. 2. Insert 4-40 screw into either of the tapped holes on the face of the retainer and extract from housing. 3. Remove bearings and rotor/shaft assembly. 4. Review all parts for damage. <ul style="list-style-type: none"> A. Check bearings thoroughly. B. Check o-ring for cracks/nicks. Replace if evident. 	<ol style="list-style-type: none"> 1. With a large screw driver, remove screw plug. 2. Insert 4-40 screw into either of the tapped holes on the face of the retainer and extract from housing. 3. Remove rotor/bearing assembly. 4. Review all parts for damage. <ul style="list-style-type: none"> A. Check bearing faces and bore thoroughly. B. Check o-ring for cracks/nicks. Replace if evident 	<p>NOTE: If any part appears damaged, DO NOT REASSEMBLE, call factory for instructions.</p> <ol style="list-style-type: none"> 1. Insert bearing into bearing cup. 2. Insert rotor/shaft assembly and bearing. 3. Insert retainer (with o-ring) and remove 4-40 screw. 4. Screw in screw plug. 	<p>NOTE: If any part appears damaged, DO NOT REASSEMBLE, call factory for instructions.</p> <ol style="list-style-type: none"> 1. Place rotor/bearing assembly on shaft. 2. Insert retainer (with o-ring) and remove 4-40 screw. 3. Screw in screw plug. <p>For liquid applications: Internals work best when wet.</p>

FIGURE 4: MF100-175 LO-FLO SERIES FLOWMETER

SLEEVED BEARING INTERNALS		
This assembly references all Model Numbers with Graphitar (GS), Teflon (TS), Carbide (CS) and Fluorosint (FS) sleeved bearing designator.		
DESIGNATOR	DESCRIPTION	QTY
A	HOUSING	1
B	SCREW PLUG	1
C-2	RETAINER	1
D-1	ROTOR/BEARING ASSY.	1
F-2	SHAFT	1
G	PICKUP COIL	1
H	O-RING****	1

BALL BEARING INTERNALS		
This assembly reference's all Model Numbers with Teflon Ball (TB), Metal Ball (MB) and Cryo Ball (CB) bearing designator.		
DESIGNATOR	DESCRIPTION	QTY
A	HOUSING	1
B	SCREW PLUG	1
C-1	RETAINER	1
D	ROTOR	1
E	BEARING	2
F-1	SHAFT	1
G	PICKUP COIL	1
H	O-RING****	1

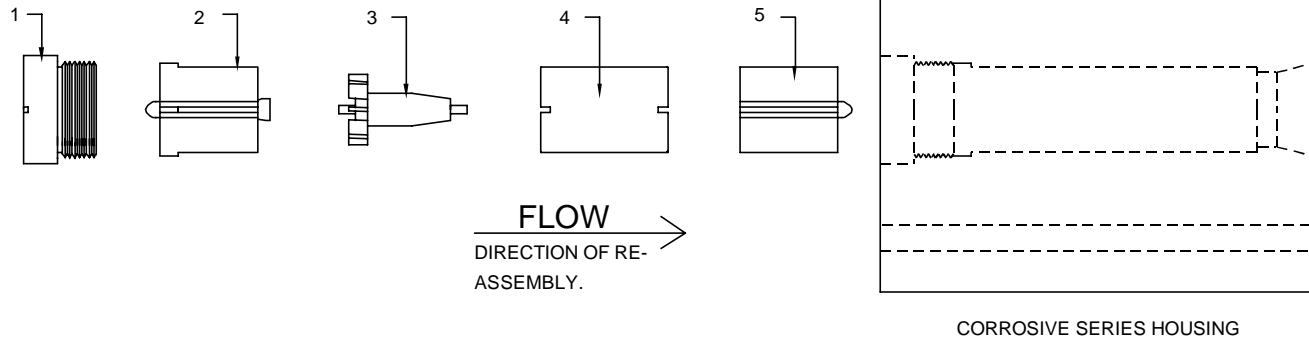
**** CONSULT FACTORY FOR O-RING MATERIALS AND INSTALLATION.



DISASSEMBLY PROCEDURE		REASSEMBLY PROCEDURE	
FOR BALL BEARING	FOR SLEEVED BEARING	FOR BALL BEARING	FOR SLEEVED BEARING
<ol style="list-style-type: none"> 1. With a large screw driver, remove screw plug. 2. Insert 4-40 screw into either of the tapped holes on the face of the retainer and extract from housing. 3. Remove bearings and rotor. It is not necessary to remove shaft. 4. Review all parts for damage. <ul style="list-style-type: none"> A. Check bearings thoroughly. B. Check o-ring for cracks/nicks. Replace if evident. 	<ol style="list-style-type: none"> 1. With a large screw driver, remove screw plug. 2. Insert 4-40 screw into either of the tapped holes on the face of the retainer and extract from housing. 3. Remove rotor/bearing assembly. It is not necessary to remove shaft. 4. Review all parts for damage. <ul style="list-style-type: none"> A. Check bearing faces and bore thoroughly. B. Check o-ring for cracks/nicks. Replace if evident. 	<p>NOTE: If any part appears damaged, DO NOT REASSEMBLE, call factory for instructions.</p> <ol style="list-style-type: none"> 1. Insert bearings into rotor and insert in housing on shaft. 3. Insert retainer (with o-ring) and remove 4-40 screw. 4. Screw in screw plug. 	<p>NOTE: If any part appears damaged, DO NOT REASSEMBLE, call factory for instructions.</p> <ol style="list-style-type: none"> 1. Place rotor/bearing assembly on shaft in housing. 2. Insert retainer (with o-ring) and remove 4-40 screw. 3. Screw in screw plug. <p>For liquid applications: Internals work best when wet.</p>

FIGURE 5: CORROSIVE SERIES FLOWMETER

ITEM	DESCRIPTION	QTY
1	END NUT	1
2	UPSTREAM HANGER	1
3	ROTOR/PIVOT ASSEMBLY	1
4	SLEEVE	1
5	DOWNSTREAM HANGER	1



DISASSEMBLY FOR CORROSIVE METERS	REASSEMBLY FOR CORROSIVE METERS
<ol style="list-style-type: none"> 1. Unscrew end nut from housing. 2. Retract upstream hanger from housing. 3. Remove rotor. NOTE: Pivot is pressed into rotor DO NOT ATTEMPT TO REMOVE. 4. From opposite end of housing, push sleeve and downstream hanger through upstream end of housing. 5. Review all parts for damage. Be sure the bearings in the end of the hangers are still intact. Clean off all debris before reassembling. <p>NOTE: If any part appears damaged DO NOT REASSEMBLE, call factory for instructions.</p>	<ol style="list-style-type: none"> 1. Assemble internals as illustrated. 2. From upstream end of housing, insert internals into housing. It may be necessary to tilt the meter housing slightly for easier insertion of the internals. 3. Screw in end nut and tighten. <p>NOTE: For proper operation, internals must be housed. For liquid applications: internals work best when wet.</p>