

Product Quick Reference Card

Device Maintenance

Battery Replacement

Materials:

0.050" HEX driver (Allen key)

Thin blade (knife or small screw driver)

LTC-7PN Replacement Battery

Procedure:

- Use HEX driver to loosen set screw on the side of the enclosure
- Use thin blade to begin prying the cover out of the logger
- Gently pull circuit board from enclosure
- Unwrap the yellow tape from around the battery
- Pull the battery perpendicularly away from the circuit board
- Insert the new battery firmly into the sockets and rewrap securely with the tape
- Compress the spring over the centerpost, and slide the board back in the enclosure
- Replace the cover, and snug the setscrew

Battery Warning

WARNING: FIRE, EXPLOSION, AND SEVERE BURN HAZARD. DO NOT SHORT CIRCUIT, CHARGE, FORCE OVER DISCHARGE, DISASSEMBLE, CRUSH, PENETRATE OR INCINERATE. BATTERY MAY LEAK OR EXPLODE IF HEATED ABOVE 80°C (176°F).

Recalibration

The SGTemp1000 standard calibration is a two point calibration at 25°C and 150°C.

Pricing:

Recalibration traceable to NIST \$60.00
Recalibration \$40.00

Additional:

As Found Data \$15.00
Additional Points \$15.00 per point

To send the devices back, visit www.madgetech.com, select Services then RMA Process.

Part Number	SGTemp1000
Temperature Sensor	100Ω Platinum RTD
Temperature Measurement Range	-50 to +150°C for probe
Temperature Resolution	0.01°C
Calibrated Accuracy	±0.1°C
Memory	21,845
Sample Rate	2 seconds up to 12 hours
Required Interface Package	IFC110 or IFC200
Baud Rate	2,400
Typical Battery Life	1 year
Operating Environment	-40 to +80°C, 0 to 100%RH
Submergible	Splash-proof, IP65
Material	Anodized aluminum
Dimensions	Data Logger: 2.75" x 1.5" dia. (70mm x 39mm dia.) Probe: 1.15" x 0.095" OD (30mm x 2.5mm)
Approvals	-

Specifications subject to change.

See MadgeTech's terms and conditions at www.madgetech.com

MadgeTech, Inc.

PO Box 50 • 879 Maple Street, Contoocook, NH 03229

Phone 603.456.2011 • Fax 603.456.2012

www.madgetech.com • info@madgetech.com

REV C 2010.01.11

Product Information Card

SGTemp1000



SGTemp1000
Temperature Recorder



To view the full MadgeTech product line, visit our website at www.madgetech.com.

Product Notes

Using a Smart Gasket® and fitting, simply insert the RTD probe into the gasket until the base of the probe fits into the fitting opening as seen in the picture on the front.

Installation Guide

Installing the Interface cable

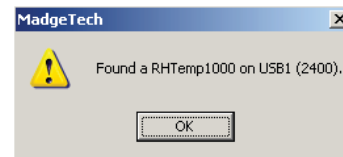
- IFC200, IFC202 or IFC300
Refer to the “Quick Start Guide” included in the package.
- IFC110, IFC102 or IFC103
Plug the serial cable into the port and verify it is secure.
- USB-1 or USB-101
Install the USB drivers from the CD provided in the kit, then plug the USB cable into the computer and the serial cable into the serial port.

Installing the software

Insert the Software CD in the CD-ROM Drive. If the autorun does not appear, locate the drive on the computer and double click on **Autorun.exe**. Follow the instructions provided in the Wizard.

Connecting the data logger

- Once the software is installed and running, plug the interface cable into the data logger.
- Click the **Communication Menu**, then **Auto Configure Port**.
- After a moment, a box similar to the following will appear;



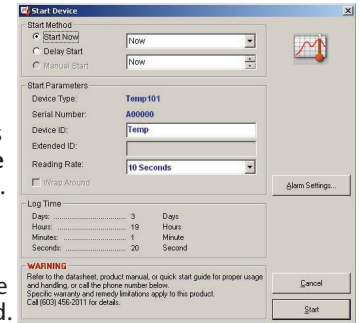
- Click **OK**. The **Device Status** box will appear. Click **OK**.
- At this point, communications have been configured for your logger. These settings can be found under the **Communication Menu**.

Note: For additional installation instructions refer to your “Data Logger & Software Operating Manual”.

Device Operation

Starting the data logger

- Click **Device Menu** then **Start Device**.
- Choose the desired start method.
- Choose the start parameters by selecting a **Reading Rate** suitable for your application.
- Enter in any other desired parameters and click **Start**.
- A box will appear stating the data logger has been started. Click **OK**.



- Disconnect the data logger from the interface cable and place it in the environment to measure.

Note: The device will stop recording data when the end of memory is reached or the device is stopped. At this point the device cannot be restarted until it has been re-armed by the computer.

Downloading data from a data logger

- Connect the data logger to the interface cable.
- Click the **Device Menu** then **Read Device Data**. This will offload all recorded data onto the PC.

Technical Support

Visit www.madgetech.com, or call (603) 456-2011. Technical support is also available by e-mailing support@madgetech.com

Additional product information is available by e-mailing info@madgetech.com.