

Device Maintenance

Battery Replacement

- Materials:
- Small Needle Nose Pliers
- Replacement Battery (TL-2150)

- Carefully unscrew the sensor end cap and pull the electronics out.
- The battery is the purple cylinder on the circuit board.
- Gently pull out the old battery.
- Insert the new battery one lead at a time, using pliers to fully push the leads into the sockets.

Note: The battery should be flat against the circuit board, and the positive lead should be closest to the communications jack.

- Ensure the circuit board is inserted into the white plastic bushing. The sensor cable should not be twisted, or kinked. From the connection to the circuit board, it should run up towards the battery, then down to the sensor.
- Insert the electronics back into the tube and carefully screw the cap on.

Battery Warning

WARNING: FIRE, EXPLOSION, AND SEVERE BURN HAZARD. DO NOT SHORT CIRCUIT, CHARGE, FORCE OVER DISCHARGE, DISASSEMBLE, CRUSH, PENETRATE OR INCINERATE. BATTERY MAY LEAK OR EXPLODE IF HEATED ABOVE 80°C (176°F).

Recalibration

The Temp1000IS standard calibration is one point at 25°C.

Pricing:

- Recalibration traceable to NIST \$60.00
- Recalibration \$40.00

Additional:

- As Found Data \$15.00 per parameter/channel
- Verification Point \$15.00 per point

To send the devices back, visit www.madgetech.com, select Services then RMA Process.

Part Number	Temp1000IS
Temperature Sensor	Internal semiconductor
Temperature Range	-40 to +80°C
Temperature Resolution	0.1°C
Calibrated Accuracy	±0.5°C
Memory	32,767
Sample Rate	2 seconds up to 12 hours
Required Interface Package	IFC110 or IFC200
Baud Rate	2,400
Typical Battery Life	1 year
Operating Environment	-40 to +80°C, 0 to 100%RH
Material	Available in anodized aluminum or 303 stainless steel
Dimensions	4.3" x 1.0" dia. (110mm x 26mm dia.)
Approvals	CE, FM approved

Specifications subject to change.

See MadgeTech's terms and conditions at www.madgetech.com



Temp1000IS

Intrinsicly Safe Temperature Recorder with Aluminum Enclosure

Temp1000IS-SS

Intrinsicly Safe Temperature Recorder with Stainless Steel Enclosure

MadgeTech, Inc.

PO Box 50 • Warner, NH 03278
 Phone 603.456.2011 • Fax 603.456.2012
www.madgetech.com • info@madgetech.com

Product Notes

Submergibility

The Temp1000IS is only submergible to a depth of 5 feet (1m). If the logger is exposed to depths deeper than 5 feet the Intrinsically Safe rating is void.

O-Rings

O-ring maintenance is a key factor when properly caring for the Temp1000IS. The o-rings ensure a tight seal and prevent liquid from entering the inside of the device.

Please refer to the application note "O-Rings 101: Protecting Your Data", found on the MadgeTech website, for information on how to prevent O-ring failure.

Note: For more information refer to the *Temp1000IS Intrinsic Safety user notice*.

Installation Guide

Installing the Interface cable

- IFC200, IFC202 or IFC300
Refer to the "Quick Start Guide" included in the package.
- IFC110, IFC102 or IFC103
Plug the serial cable into the port and verify it is secure.

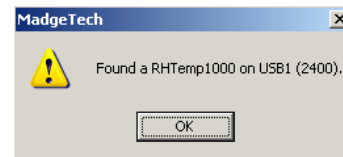
- USB-1 or USB-101
Install the USB drivers from the CD provided in the kit, then plug the USB cable into the computer and the serial cable into the serial port.

Installing the software

Insert the Software CD in the CD-ROM Drive. If the autorun does not appear, locate the drive on the computer and double click on **Autorun.exe**. Follow the instructions provided in the Wizard.

Connecting the data logger

- Once the software is installed and running, plug the interface cable into the data logger.
- Click the **Communication Menu**, then **Auto Configure Port**.
- After a moment, a box similar to the following will appear;



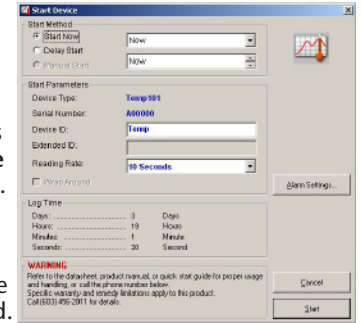
- Click **OK**. The **Device Status** box will appear. Click **OK**.
- At this point, communications have been configured for your logger. These settings can be found under the **Communication Menu**.

Note: For additional installation instructions refer to your "Data Logger & Software Operating Manual".

Device Operation

Starting the data logger

- Click **Device Menu** then **Start Device**.
- Choose the desired start method.
- Choose the start parameters by selecting a **Reading Rate** suitable for your application.
- Enter in any other desired parameters and click **Start**.
- A box will appear stating the data logger has been started. Click **OK**.



- Disconnect the data logger from the interface cable and place it in the environment to measure.

Note: The device will stop recording data when the end of memory is reached or the device is stopped. At this point the device cannot be restarted until it has been re-armed by the computer.

Downloading data from a data logger

- Connect the data logger to the interface cable.
- Click the **Device Menu** then **Read Device Data**. This will offload all recorded data onto the PC.

Technical Support

Visit www.madgetech.com, or call (603) 456-2011. Technical support is also available by e-mailing support@madgetech.com

Additional product information is available by e-mailing info@madgetech.com.