

### Features

- Ultra low operating temperature (-86°C)
- May be placed in direct contact with dry ice
- No external probes or wiring
- High accuracy
- Programmable alarm and warn ranges with alarm delay
- LED status indicators for instant alarm notification
- Magnetic start
- Optional password protection
- Splash resistant (IP65)
- CE Compliant

### Applications

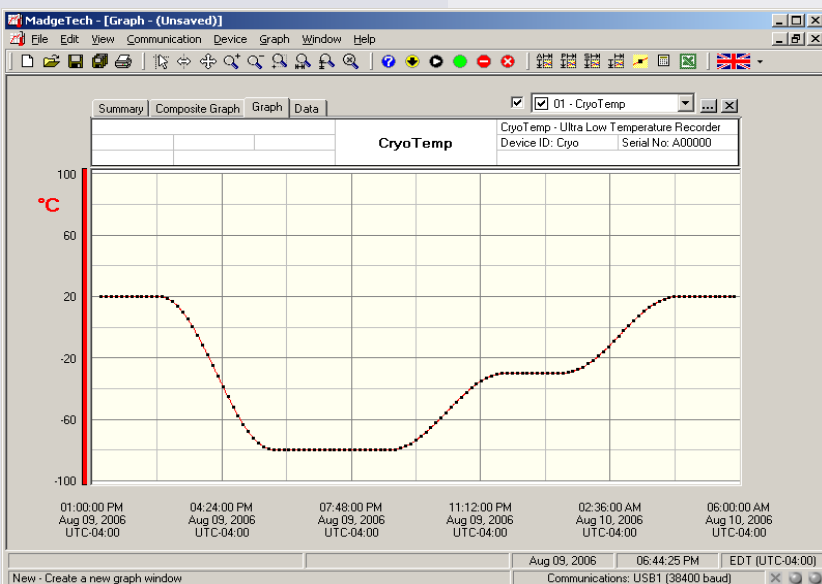
- Dry ice shipments
- Plasma and red cell freezers
- Blood banks/frozen tissue storage
- Monitoring frozen vaccines
- Ultra low temperature storage/laboratory freezers
- Medical and pharmaceutical shipping
- Deep frozen foods
- Cold chain monitoring
- Low temperature research

MadgeTech's new ultra low temperature data recorder, records temperatures as low as -86°C. The Cryo-Temp can be used in a broad line of applications such as monitoring blood plasma, vaccines, pharmaceuticals, frozen foods and shipping containers. This stand-alone device does not require any additional probes. The enclosure is designed with a handle for easy attachment and is IP65 splash resistant. It utilizes a USB docking station (sold separately), to communicate with a personal computer or laptop.



The Cryo-Temp provides date and time stamped temperature readings and uses the MadgeTech Data Logging Software. The user can view the data in graphical or tabular form. High and low alarm limits and high and low warning limits can be programmed through the software. The user can set the alarm limits in the range required for the goods to be maintained. The warn limits can be set to alert the user when the temperature is nearing a high or low alarm limit, so that proper action can be taken to ensure the integrity of the goods.

The Cryo-Temp is equipped with three LED's. The green LED will blink every 15 seconds while the recorder is logging data. The yellow LED will blink every 3 seconds when the temperature has breached the warning limits. The red LED will blink every 3 seconds when the temperature alarm limits have been exceeded. The Cryo-Temp is the ideal temperature monitoring solution for any application involving ultra low temperature recording.



### MadgeTech Data Recorder Software

displays temperature data in an easy to use graph.

This Windows®-based software package allows the user to effortlessly collect, display and analyze data. A variety of powerful tools allow the user to examine, export, and print professional looking charts and graphs with just a click of the mouse.

Click MadgeTech Software for more information or to download the software.

# CRYO-TEMP SPECIFICATIONS\*

## TEMPERATURE

**Sensor:** NTC Thermistor

**Measurement Range:** -86°C to +35°C recommended, may be used up to +55°C

**Resolution:** 0.1°C

**Calibrated Accuracy:** ±1.0°C

**Specified Accuracy Range:** -80°C to 0°C

**Memory:** 32,767 readings; software configurable memory wrap

**Reading Rate:** 5 seconds to 30 minutes, selectable in software

**Start Modes:** Software programmable immediate start, delay start up to 30 days in advance or manual start with magnetic switch.

**Temperature Alarm:** Software programmable high and low alarm limits, high and low warn limits  
Each setpoint may be individually enabled or disabled

**Alarm Delay:** Software programmable time delay for warn/ alarm limits. Logger will not indicate out of range status until the temperature has been out of range for a set period of time.

**Status Indicators:** Green: Blinks to indicate safe conditions during logging  
Yellow: Blinks to indicate warn limits have been exceeded  
Red: Blinks to indicate alarm criteria (limits/ delay) have been exceeded

**Password Protection:** An optional password may be programmed into the device to restrict access to configuration options. Data may be read out without the password.

**Calibration:** Digital calibration is available to the user through software

**Calibration Date:** Automatically recorded within device

**Battery Type:** 3.6V lithium battery (LTC-7PN), **factory replaceable only**

**Battery Life:** 2 years typical @ 25°C, 1 min. reading intervals  
1 year typical @ -80°C, 1 min. reading intervals

**Time Accuracy:** ±2 minutes/month max. at 20 to 30°C  
±5 minutes/month max at -80°C

**Data Format:** Date and time stamped °C, °F, K, °R

**Computer Interface:** USB docking station to PC (IFC300)  
38,400 baud

**Software:** XP SP3/Vista/Windows 7

**Operating Environment:** -86°C to +35°C (may be used up to +55°C);  
0 to 100% RH

**Dimensions:** 3.3" x 2.1" x 0.4" (83 mm x 54 mm x 11 mm)

**Ingress Protection/IP Rating:** IP65 (splash resistant, not submersible)

**Enclosure:** ABS plastic, white, polycarbonate labeling

**Weight:** 1.4 oz (40 g)

**Compliance:** CE, Approved for carriage on Delta® mainline flights

**BATTERY WARNING:** FIRE, EXPLOSION, AND SEVERE BURN HAZARD.  
DO NOT RECHARGE, DISASSEMBLE, HEAT ABOVE 212°F,  
INCINERATE OR EXPOSE CONTENTS TO WATER.

## SOFTWARE FEATURES

<b>Multiple Graphs:</b>	Simultaneously analyze data from several units or deployments; easily switch to a single data series	<b>Statistics:</b>	Calculate averages, min, max, standard deviation, and mean kinetic temperature with the touch of a button
<b>Real-Time Recording:</b>	Collect and display data in real-time while continuing to log	<b>Export Data:</b>	Export data in a variety of common formats, or switch to Excel® with a single click
<b>Data Table:</b>	Instantly access tabular view for detailed dates, times, values, and annotations	<b>Calibration:</b>	Automatically calculate and store calibration parameters
<b>Scaling Options:</b>	Autoscale function fits data to the screen, or allows user to manually enter their own values	<b>Logger Configuration:</b>	Easy set up and launch of data loggers with immediate or delayed start, preferred sample rate, and device ID
<b>Formatting Options:</b>	Change colors, line styles, plotting options, show or hide channels quickly	<b>Printing:</b>	Automatically print graphical or tabular data

## ORDERING INFORMATION

\*SPECIFICATIONS ARE SUBJECT TO CHANGE WITHOUT NOTICE. SPECIFIC WARRANTY AND REMEDY LIMITATIONS APPLY.  
CALL 1-603-456-2011 OR GO TO WWW.MADGETECH.COM FOR DETAILS.

Model	Description	Price (U.S.)
CRYO-TEMP	Ultra Low Temperature Recorder	\$199.00
CRYO-TEMP-CERT	Ultra Low Temperature Recorder with N.I.S.T. Certificate	\$259.00
IFC300	Software, manual, docking station and USB connection cable	\$69.00
SVP -Secure	Protocols for validating the 21 CFR Part 11 ready, secure logging system	\$600.00
SVP-Secure License	License for MadgeTech SVP-Secure Software (unlimited users, license per computer)	\$1000.00

### ASK ABOUT OUR OTHER DATA RECORDERS

Temperature	Pulse/Event/State
Humidity	Low Level Current
Pressure	Low Level Voltage
pH	RF Transmitters
Level	Intrinsically Safe
Shock	Spectral Vibration
LCD Display	



DOC-1001009-00 REV O 2010.09.17