

### Features

- Type k thermocouples included
- IP65, dust proof and splash proof
- Pushbutton or programmable start for efficient processing
- Channel naming for location detection
- Open channel detection
- 8 thermocouple clips included

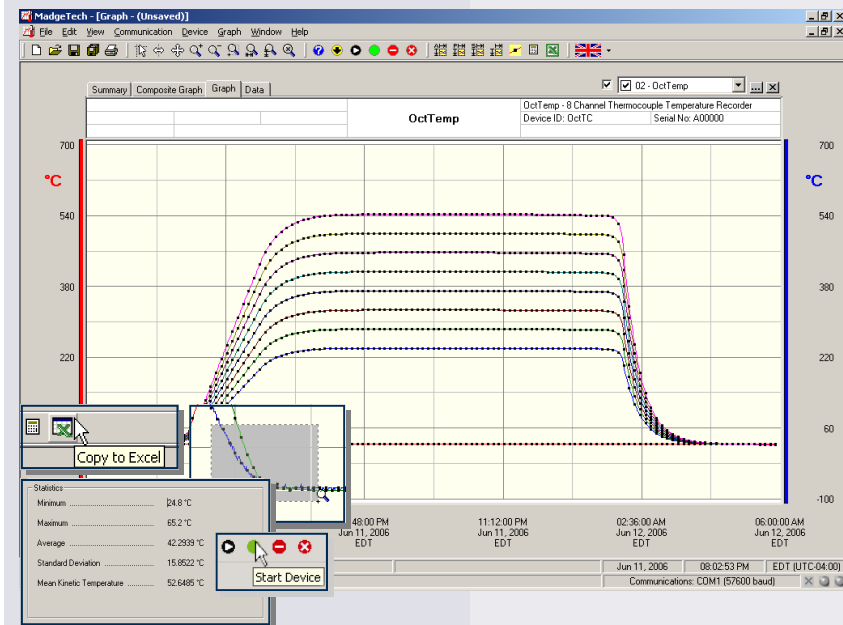
### Applications

- Carcass Temperature Monitoring
  - Pasteurization
  - Verification
  - Validation
- Pathogen reduction
- Post-slaughter pasteurization

MadgeTech's Carcass Temperature Logger measures and records data from up to 8 thermocouple channels allowing the user to verify and validate post-production meat pasteurization cycles. The CTL2000 aids in reducing pathogens, and helps to ensure post-slaughter pasteurization process parameters are met.

The CTL2000 has a black anodized aluminum enclosure with a stainless steel hook allowing the device to be hung directly from a carcass. This durable logger is splashproof and can be used through the entire pasteurization process. The eight thermocouples can be inserted into different sections of the meat to provide an overall temperature profile. This logger features a push button or programmable start and status LEDs for process optimization. In addition, if a thermocouple is removed or severed during logging, the software automatically annotates the data.

MadgeTech's CTL2000 can help to reduce and prevent food safety problems, improve quality and ensure that the chances of a recall are minimized.



**MadgeTech Data Recorder Software** displays temperature data in an easy to use graph.

The Windows®-based software package allows the user to effortlessly collect, display and analyze data. A variety of powerful tools allow you to examine, export, and print professional looking data with just a click of the mouse.

Click [MadgeTech Software](#) for more information or to download the software.

# CTL2000 SPECIFICATIONS\*

## Internal Channel

Temperature Range: -20 to +60°C

Temperature Resolution: 0.05°C

Calibrated Accuracy: ±0.5°C (0 to +50°C)

## 8 Remote Channels

Remote Channel Type K Supplied

Thermocouple Types: (J, T, E, R, S, B and N compatible)

Thermocouple connection: Female subminiature (SMP)

Cold Junction Compensation: Automatic, based on internal channel

Maximum Thermocouple Resistance: 1000Ω, <100Ω recommended

Thermocouple	Range (°C)	Resolution	Accuracy
K	-260 to +1370	0.1 °C	±0.5 °C

Start Modes: Software programmable immediate start, push button or delay start up to six months in advance

Real Time Recording: May be used with PC to monitor and record data in real time

Memory: 500,000 readings per channel, channels can be disabled to increase memory

Reading Rate: 4 readings per second up to 1 every 24 hours

Calibration: Digital calibration through software

Calibration Date: Automatically recorded within device

Battery Type: 6 AA batteries included, user replaceable

Battery Life: 2 years typical

Data Format: Date and time stamped °C, °F, K, °R, mV, V

Time Accuracy: ±1 minute/month

Computer Interface: PC serial or USB (Interface cable required); 115,200 baud

Software: XP SP3/Vista/Windows 7

Operating Environment: Continuous use: -20~+60°C (-4°F to 140°F)

Temperature	Maximum Time
75°C	23 minutes
100°C	17 minutes
125°C	14 minutes

IP Rating: IP65

Dimensions: 7.7" x 5.9" x 1.9" (196mm x 150mm x 48mm)

Material: Enclosure: Black anodized aluminum  
Hook: Stainless Steel

Weight: 5lbs 8oz

\*SPECIFICATIONS ARE SUBJECT TO CHANGE WITHOUT NOTICE. SPECIFIC WARRANTY AND REMEDY LIMITATIONS APPLY. CALL 1-603-456-2011 OR GO TO WWW.MADGETECH.COM FOR DETAILS.

**BATTERY WARNING:** DISCARD USED BATTERY PROMPTLY. KEEP OUT OF REACH OF CHILDREN. DO NOT DISPOSE OF IN FIRE, RECHARGE, PUT IN BACKWARDS, DISASSEMBLE, OR MIX WITH OTHER BATTERY TYPES. MAY EXPLODE, FLAME, OR LEAK AND CAUSE PERSONAL INJURY.

## SOFTWARE FEATURES

**Multiple Graphs:** Simultaneously analyze data from several units or deployments; easily switch to a single data series

**Graphical Cursor:** One click displays readings by time, value, parameter or sample number

**Data Table:** Instantly access tabular view for detailed dates, times, values, and annotations

**Scaling Options:** Autoscale function fits data to the screen, or allows user to manually enter their own values

**Formatting Options:** Change colors, line styles, plotting options, show or hide channels quickly

**Statistics:** Calculate averages, min, max, standard deviation, and mean kinetic temperature with the touch of a button

**Export Data:** Export data in a variety of common formats, or switch to Excel® with a single click

**Calibration:** Automatically calculate and store calibration parameters

**Logger Configuration:** Easy set up and launch of data loggers with immediate or delayed start, preferred sample rate, and device ID

**Communications:** Automatically sets up communications port, or lets user select configuration

## ORDERING INFORMATION

Model	Description	Price (U.S.)
CTL2000	Carcass Temperature Logger	\$1,950.00
IFC110	Software, manual and RS232 interface cable	\$99.00
IFC200	Software, manual and USB interface cable	\$119.00
NIST	N.I.S.T. Calibration Certificate	Call for Pricing

For Quantity Discounts call 603-456-2011 or email [sales@madgetech.com](mailto:sales@madgetech.com)

### ASK ABOUT OUR OTHER DATA RECORDERS

Temperature	Pulse/Event/State
Humidity	Low Level Current
Pressure	Low Level Voltage
pH	RF Transmitters
Level	Intrinsically Safe
Shock	Spectral Vibration
LCD Display	

