

### Features

- Reusable
- Submersible
- Programmable start time
- User-friendly
- Low cost
- 0 to 60°C temperature range
- $\pm 0.5^{\circ}\text{C}$  accuracy
- $0.1^{\circ}\text{C}$  resolution

### Applications

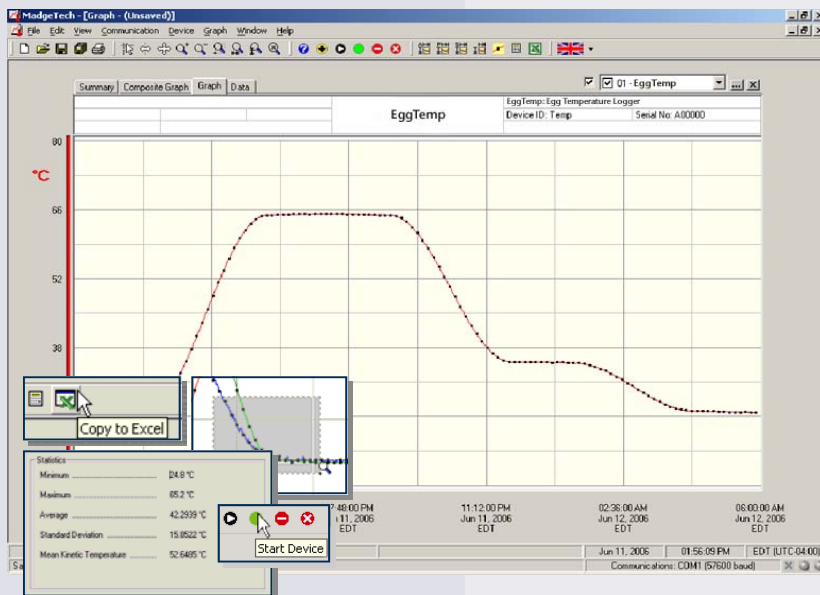
- Egg shipment
- Egg storage
- Hatcheries

MadgeTech's EggTemp is specifically designed to measure and record the temperature of eggs during shipping, storage and incubation. The logger thermally responds to an environment the same way a real egg does, simulating the temperature experience of the actual product.



The EggTemp is submersible and can measure temperatures up to 60°C. It has a user replaceable battery, that typically lasts up to 1 year. The nonvolatile memory can hold up to 32,767 readings and will retain data even if the battery becomes discharged.

MadgeTech's data logger software offers an easy way to analyze data. Data can be viewed in Celsius or Fahrenheit, and in graph, summary or data formats. For further analysis data can also be exported to Excel.



**MadgeTech Data Recorder Software** displays temperature data in an easy to use graph.

The Windows<sup>®</sup>-based software package allows the user to effortlessly collect, display and analyze data. A variety of powerful tools allow you to examine, export, and print professional looking data with just a click of the mouse.

Click [MadgeTech Software](#) for more information or to download the software.

## EGGTEMP SPECIFICATIONS\*

<b>Temperature Sensor:</b> Internal Semiconductor	<b>Reading Rate:</b> 1 reading every 2 seconds to 1 every 12 hours
<b>Temperature Range:</b> 0 to +60°C	<b>Start Modes:</b> Software programmable immediate start or delay start up to six months in advance
<b>Temperature Resolution:</b> 0.1°C	<b>Data Format:</b> Date and time stamped °C, °F, K, °R
<b>Calibrated Accuracy:</b> ±0.5°C	<b>Battery Type:</b> 2 - 1.55V SR1154W batteries included; <b>user replaceable</b>
<b>Alarm:</b> Programmable high and low limits; Alarm is activated when temperature reaches or exceeds set limits.	<b>Battery Life:</b> 1 year typical at 25°C, 1 minute reading intervals
<b>Activity Indicator:</b> Green LED blinks to indicate device has been started, red LED blinks if an alarm condition exists.	<b>Time Accuracy:</b> ±1 minute/month at 20°C
<b>Calibration:</b> Digital calibration through software	<b>Computer Interface:</b> PC serial or USB (interface cable required); 38,400 baud
<b>Calibration Date:</b> Automatically recorded within device	<b>Software:</b> XP SP3/Vista/Windows 7
<b>Real Time Recording:</b> May be used with PC to monitor and record data in real time	<b>Operating Environment:</b> 0 to +60°C, 0 to 100%RH
<b>Memory:</b> 32,767 readings	<b>Submersible:</b> Up to 150 ft., IP68
	<b>Dimensions:</b> 2.25" X 1.68" dia. (57.15mm x 42.67mm dia.)
	<b>Weight:</b> 2.02 oz (60 g)
	<b>Material:</b> Enclosure: HDPE    Logger: 303 Stainless Steel
	<b>Approvals:</b> CE Compliant

**BATTERY WARNING:** RISK OF FIRE AND BURNS. DO NOT RECHARGE, SHORT, DISASSEMBLE, HEAT ABOVE 100°C OR INCINERATE.

## SOFTWARE FEATURES

<b>Multiple Graphs:</b> Simultaneously analyze data from several units or deployments; easily switch to a single data series	<b>Statistics:</b> Calculate averages, min, max, standard deviation, and mean kinetic temperature with the touch of a button
<b>Real-Time Recording:</b> Collect and display data in real-time while continuing to log	<b>Export Data:</b> Export data in a variety of common formats, or switch to Excel® with a single click
<b>Graphical Cursor:</b> One click displays readings by time, value, parameter or sample number	<b>Calibration:</b> Automatically calculate and store calibration parameters
<b>Data Table:</b> Instantly access tabular view for detailed dates, times, values, and annotations	<b>Logger Configuration:</b> Easy set up and launch of data loggers with immediate or delayed start, preferred sample rate, and device ID
<b>Scaling Options:</b> Autoscale function fits data to the screen, or allows user to manually enter their own values	<b>Communications:</b> Automatically sets up communications port, or lets user select configuration
<b>Formatting Options:</b> Change colors, line styles, plotting options, show or hide channels quickly	<b>Printing:</b> Automatically print graphical or tabular data

\*SPECIFICATIONS ARE SUBJECT TO CHANGE WITHOUT NOTICE. SPECIFIC WARRANTY AND REMEDY LIMITATIONS APPLY. CALL 1-603-456-2011 OR GO TO WWW.MADGETECH.COM FOR DETAILS.

## ORDERING INFORMATION

<u>Model</u>	<u>Description</u>	<u>Price (U.S.)</u>
EGGTEMP	EggTemp, egg temperature data logger	\$140.00
IFC102	Software, manual and RS232 interface cable for Micro Series.	\$99.00
IFC202	Software, manual and USB interface cable for Micro Series.	\$119.00
NIST	N.I.S.T. Calibration Certificate	Call for Pricing
SR1154	Replacement battery for the EggTemp	\$5.00

### ASK ABOUT OUR OTHER DATA RECORDERS

Temperature	Pulse/Event/State
Humidity	Low Level Current
Pressure	Low Level Voltage
pH	RF Transmitters
Level	Intrinsically Safe
Shock	Spectral Vibration
LCD Display	

For Quantity Discounts call 603-456-2011 or email [sales@madgetech.com](mailto:sales@madgetech.com)

