

MadgeTech Simplifies Selection of Diesel Particulate Filters, Contributing to a Cleaner Environment.

Features

- Automatic Temperature Profiling
- Low cost
- Simple to operate
- Easy to install, easy to remove
- 10 year battery life

Applications

- Profile exhaust temperature of on-road vehicles and off-road equipment.

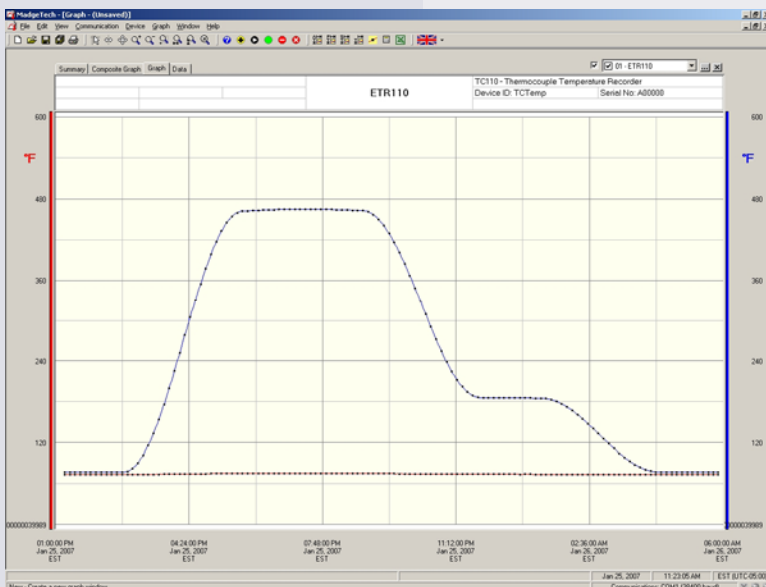


The ETR110 is a complete Exhaust Temperature Profiling Kit designed to profile the exhaust temperature of on-road vehicles and off-road equipment, including tractor trailers, buses, trucks over 14,000 lbs., waste water vehicles, and sweepers. The ETR110 kit comes assembled and includes a data logger, temperature sensor (thermocouple type K), weatherproof enclosure, interface cable, hex screwdriver, software a 1/4" NPT coupler and a compression fitting is required for assembling, but not included.

Setup is fast and easy. The 1/4" NPT coupler is attached to the exhaust pipe; the use of a compression fitting allows for the thermocouple to be placed directly in the exhaust stream, providing for highly accurate profiling. The data logger, which is contained within the weatherproof enclosure, is then mounted to the vehicle.

Using the MadgeTech software, the logger is programmed to record for a set period, generally three to five days. Data is stored in the data logger, and is downloadable at any time via a pc or laptop computer. The complete temperature profile is then provided to the diesel particulate filter (DPF) manufacturer, aiding in the selection of the correct DPF for the exhaust system.

Many DPF manufacturers, including Donaldson Corp., recommend the use of temperature profiling equipment, such as the MadgeTech ETR110, to aid in the selection of the appropriate diesel particulate filter.



MadgeTech Data Recorder Software displays temperature data in an easy to use graph.

The Windows®-based software package allows the user to effortlessly collect, display and analyze data. A variety of powerful tools allow you to examine, export, and print professional looking data with just a click of the mouse.

Click [MadgeTech Software](#) for more information or to download the software.

ETR110 SPECIFICATIONS*

Thermocouple connection: Pluggable screw terminal

Cold Junction Compensation: Automatic

Thermocouple Type: K

Range: -260 to +1370°C

Accuracy: ±2°C

Resolution: 0.1°C

Start Modes: Immediate start or delay start up to six months in advance.

Real Time Recording: May be used with PC to monitor and record data in real time

Memory: 16,383 readings per channel; software configurable memory wrap

Reading Rate: 1 reading every 2 seconds to 1 every 12 hours

Calibration: Digital calibration through software

Calibration Date: Automatically recorded within device

Battery Type: 3.6V lithium battery included, **user replaceable**

Battery Life: 10 yrs. (15 minute reading rate at 25°C (77°F))

Data Format: Date and time stamped °C, °F, K, °R

Time Accuracy: ±1 minute/month (at 20 to 30°C (68 to 86°F))

Computer Interface: PC serial or USB (interface cable required); 57,600 baud

Software: XP/Vista/Windows 7 based software

Operating Environment: -40 to +80°C (-40 to +176°F),

0 to 95%RH non-condensing

BATTERY WARNING: FIRE, EXPLOSION, AND SEVERE BURN HAZARD. DO NOT RECHARGE, DISASSEMBLE, HEAT ABOVE 212°F, INCINERATE OR EXPOSE CONTENTS TO WATER

DIMENSIONS

Data Logger: 1.7" x 2.3" x 0.8"
(44mm x 59mm x 21mm)

Weatherproof Enclosure: 3.5" x 2.9" x 1.1"
(87mm x 73mm x 27mm)

Thermocouple Wire : 24 gauge, 30 inches
(762mm) (Type K, call for other types)

Thermocouple Probe: 6" x 1/8" dia. (153mm x 3.2mm)

WEIGHT

Complete Kit: 15 oz.

**Weatherproof Enclosure,
Data Logger and
Thermocouple:** 10 oz.

SOFTWARE FEATURES

Multiple Graphs: Simultaneously analyze data from several units or deployments; easily switch to a single data series

Graphical Cursor: One click displays readings by time, value, parameter or sample number

Data Table: Instantly access tabular view for detailed dates, times, values, and annotations

Scaling Options: Autoscale function fits data to the screen, or allows user to manually enter their own values

Formatting Options: Change colors, line styles, plotting options, show or hide channels quickly

Statistics: Calculate averages, min, max, standard deviation, and mean kinetic temperature with the touch of a button

Export Data: Export data in a variety of common formats, or switch to Excel® with a single click

Calibration: Automatically calculate and store calibration parameters

Logger Configuration: Easy set up and launch of data loggers with immediate or delayed start, preferred sample rate, and device ID

Communications: Automatically sets up communications port, or lets user select configuration

*SPECIFICATIONS ARE SUBJECT TO CHANGE WITHOUT NOTICE. SPECIFIC WARRANTY AND REMEDY LIMITATIONS APPLY. CALL 1-603-456-2011 OR GO TO WWW.MADGETECH.COM FOR DETAILS.

ORDERING INFORMATION

Model	Description	Price (U.S.)
ETR110	Exhaust Temperature Recording System <i>Type K Thermocouple included. Other types available upon request. Contact MadgeTech for details.</i>	\$399.00
NIST	N.I.S.T. Calibration Certificate	Call for Pricing
LTC-7PN	Replacement battery for TC110	\$10.00

For Quantity Discounts call 603-456-2011 or email sales@madgetech.com

ASK ABOUT OUR OTHER DATA RECORDERS

Temperature	Pulse/Event/State
Humidity	Low Level Current
Pressure	Low Level Voltage
pH	RF Transmitters
Level	Intrinsically Safe
Shock	Spectral Vibration
LCD Display	



DOC-REV E 2010.09.27