

Features

- High Accuracy
- Operates up to 150°C
- 24" flexible probe
- Reusable
- Submersible
- N.I.S.T. traceable
- User-friendly
- Rugged

Benefits

- Minimal long-term maintenance
- No thermocouple wires

Applications

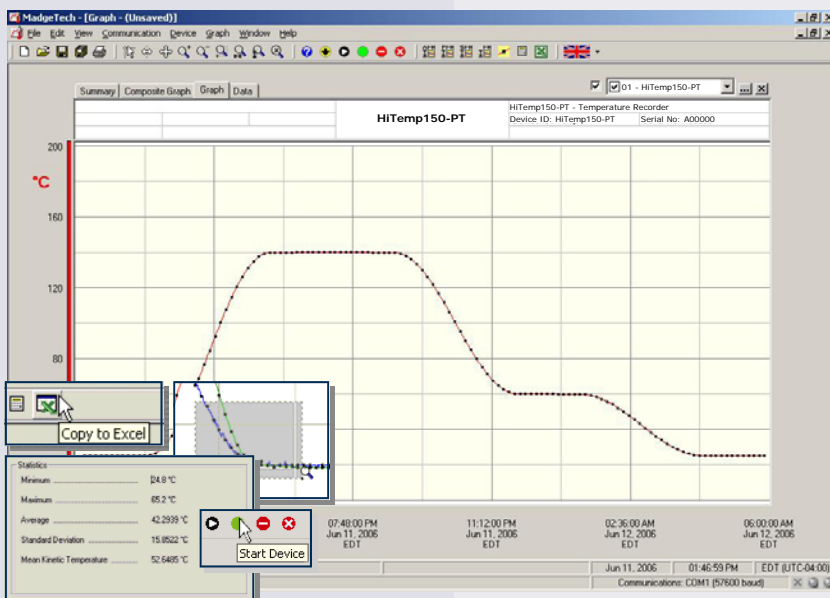
- Autoclave Verification
- Implement HACCP Programs
- Food preparation and processing
- Dish washer testing
- Pasteurization
- Oven monitoring
- Smoke houses

The HiTemp150-PT is a submersible, temperature logger that can operate up to 150°C and has a 24" flexible, stainless steel probe. The probe is durable and can be spiraled, bent or angled in any direction, making it easy to log temperatures within bottles, vials or other hard to reach places.



The HiTemp150-PT can measure and record temperatures between -40 and 150°C. Users can select reading rate options from 1 reading every second to one every 12 hours. The storage medium is non-volatile solid state memory, providing maximum data security even if the battery becomes discharged.

The device can be started and stopped directly from a computer and the HiTemp150-PT's compact design and ultra flexible probe allows it to fit almost anywhere. The MadgeTech software allows users to view the data in graph and summary views and print professional reports.



MadgeTech Data Recorder Software

Reports temperature data in an easy to use graph.

The Windows®-based software package allows the user to effortlessly collect, display and analyze data. A variety of powerful tools allow you to examine, export, and print professional looking data with just a click of the mouse.

Click [MadgeTech Software](#) for more information or to download the software.

HITEMP150-PT SPECIFICATIONS*

Temperature Sensor: 100Ω Platinum RTD	Data Format: Date and time stamped °C, °F, K, °R
Temperature Range: -40 to +150°C	Time Accuracy: ±1 minute/month at 20°C (RS232 cable not in use)
Temperature Resolution: 0.05°C	Computer Interface: PC serial or USB (Interface cable required); 2,400 baud
Calibrated Accuracy: ±0.5°C	Software: XP SP3/Vista/Windows 7
Start Modes: Software programmable immediate start or delay start up to six months in advance.	Operating Environment: -40 to +150°C, 0 to 100%RH
Real Time Recording: May be used with PC to monitor and record data in real time	Dimensions (Body): 1.1" x 1.75" dia. (28mm x 45mm dia.)
Memory: 32,767 readings	Dimensions (Probe): Probe tip: 0.125"OD x 1.5"L Flexible portion*: 24" x 0.062"OD dia.
Reading Rate: One second up to once every 12 hours	Weight: 8 oz (225 g)
Calibration: Digital calibration through software	Material: 316 Stainless Steel
Calibration Date: Automatically recorded within device	Approvals: CE
Battery Type: 3.9V high-temperature lithium battery included	
Battery Life: 1 year typical (1 minute reading rate @ 25°C)	

WARNING: FIRE, EXPLOSION, AND SEVERE BURN HAZARD. DO NOT SHORT CIRCUIT, CHARGE, FORCE OVERDISCHARGE, DISASSEMBLE, CRUSH, PENETRATE OR INCINERATE. BATTERY MAY LEAK OR EXPLODE IF HEATED ABOVE 150° C (302° F).

SOFTWARE FEATURES

Multiple Graphs: Simultaneously analyze data from several units or deployments; easily switch to a single data series	Statistics: Calculate averages, min, max, standard deviation, and mean kinetic temperature with the touch of a button
Real-Time Recording: Collect and display data in real-time while continuing to log	Export Data: Export data in a variety of common formats, or switch to Excel® with a single click
Graphical Cursor: One click displays readings by time, value, parameter or sample number	Calibration: Automatically calculate and store calibration parameters
Data Table: Instantly access tabular view for detailed dates, times, values, and annotations	Logger Configuration: Easy set up and launch of data loggers with immediate or delayed start, preferred sample rate, and device ID
Scaling Options: Autoscale function fits data to the screen, or allows user to manually enter their own values	Communications: Automatically sets up communications port, or lets user select configuration
Formatting Options: Change colors, line styles, plotting options, show or hide channels quickly	Printing: Automatically print graphical or tabular data

*SPECIFICATIONS ARE SUBJECT TO CHANGE WITHOUT NOTICE. SPECIFIC WARRANTY AND REMEDY LIMITATIONS APPLY. CALL 1-603-456-2011 OR GO TO WWW.MADGETECH.COM FOR DETAILS.

ORDERING INFORMATION

Model	Description	Price (U.S.)
HITEMP150-PT	Data logger with 24" stainless steel flexible probe	\$499.00
HITEMP150-PT-CERT	Data logger with 24" stainless steel flexible probe and N.I.S.T. Certificate	\$559.00
IFC110	Software, manual and RS232 interface cable	\$99.00
IFC200	Software, manual and USB interface cable	\$119.00
3B5700	Replacement battery for HiTemp150-PT	\$99.00
SVP –Secure	Protocols for validating the 21 CFR Part 11 ready, secure data logging system	\$600.00
SVP-Secure License	License for MadgeTech SVP-Secure Software (unlimited users, license per computer)	\$1000.00

ASK ABOUT OUR OTHER DATA RECORDERS

Temperature	Pulse/Event/State
Humidity	Low Level Current
Pressure	Low Level Voltage
pH	RF Transmitters
Level	Intrinsically Safe
Shock	Spectral Vibration
LCD Display	

