

Features

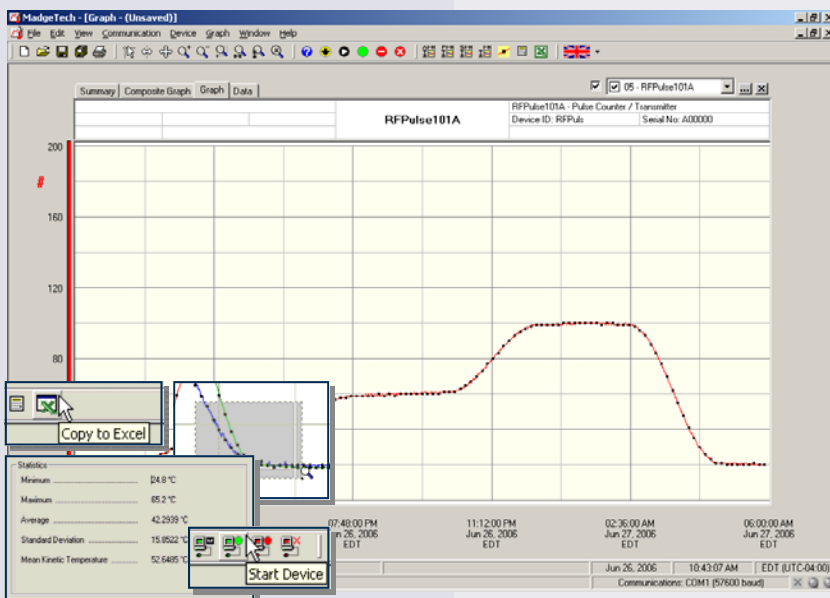
- Up to 100Hz input
- User programmable time bins
- Programmable engineering units
- Interfaces to pulse output flow meters and contact closures
- Real time operation
- Miniature size
- User-friendly
- Reusable
- Low cost

Applications

- Remote monitoring of contact closures
- Remote counting and totalizing
- Flow rate recording
- Gas and water metering
- Traffic studies
- Frequency recording
- Speedometer/rotational speed indicator



The MadgeTech RFPulse101A is a pulse recorder and wireless transmitter. This easy to use device can hold up to 4,095 pulse readings and features a configurable memory wrap mode. The wireless transmitter will transmit readings back to the host computer where the data can be analyzed in real time. These readings are also logged to the device's memory for added data security. The convenient slide switch allows the transmitter to be turned on or off without affecting the operation of the device. The device can be started, stopped and configured directly from your computer. Its small size allows it to fit almost anywhere. In addition to the wireless communications, the RFPulse101A makes data retrieval quick and easy. Simply plug the device into an empty COM port and our user-friendly software will handle the rest.



MadgeTech Data Recorder Software

displays pulse data in an easy to use graph

The Windows[®]-based software package allows the user to effortlessly collect, display and analyze data. A variety of powerful tools allow you to examine, export, and print professional looking data with just a click of the mouse.

Click [MadgeTech Software](#) for more information or to download the software.

RFPULSE101A SPECIFICATIONS*

Input Connection: Removable screw terminal	Start Modes: Software programmable immediate start or delay start up to six months in advance
Internal Weak Pull-Up: < 500 μ A	Memory: 4,095 readings; software configurable memory wrap
Input Low: < 0.4 V	Calibration: None required
Input High: > 2.7 V	Reading Rate: 1 reading every 30 seconds to every 12 hours
Input Range: 0 to 12VDC continuous; 0 to 30VDC peak	Data Format: Date and time stamped pulse count, engineering units specified through software
Input Impedance: >1 k Ω	Time Accuracy: \pm 1 minute/month (at 20 $^{\circ}$ C to 30 $^{\circ}$ C)
Minimum Pulse Width/ Contact Closure Time: 4 milliseconds	Computer Interface (serial interface): PC serial or RS232C COM (interface cable required); 57,600 baud
Maximum Pulse Rate: 100 per second (10 ms)	RF Baud Rate: 4,800 baud
Engineering Units: Software programmable. User may program any desired units up to 10 characters. Value is stored in device.	RF Carrier Frequency: 418 MHz
Scale Factor: Software programmable. User may program any desired scaling factor from \pm 1.0000E-31 to \pm 9.9999E+31. The factor is stored in the device.	Range: Line-of-sight: up to 120 ft
Offset Value: Software Programmable. User may program any desired offset value from \pm 1.0000E-31 to \pm 9.9999E+31. The factor is stored in the device.	Approvals: US (FCC), CA (IC)
Real Time Recording: May be used with PC to monitor and record data in real time.	Battery Type: 3.6V lithium battery included; user replaceable
	Battery Life: 1 year typical (10Hz, 10% duty cycle @ 25 $^{\circ}$ C)
	Software: XP SP3/Vista/Windows 7
	Operating Environment: -30 $^{\circ}$ C to +70 $^{\circ}$ C, 0 to 95 %RH non-condensing
	Dimensions: 2.7" x 1.6" x 0.8" + 2" antenna (68mm x 41mm x 20mm + 51mm antenna)
	Weight: 1.6 oz (45 g)

BATTERY WARNING: FIRE, EXPLOSION, AND SEVERE BURN HAZARD. DO NOT RECHARGE, DISASSEMBLE, HEAT ABOVE 212 $^{\circ}$ F, INCINERATE OR EXPOSE CONTENTS TO WATER.

SOFTWARE FEATURES

Multiple Graphs: Simultaneously analyze data from several units or deployments; easily switch to a single data series	Statistics: Calculate averages, min, max, standard deviation, and mean kinetic temperature with the touch of a button
Graphical Cursor: One click displays readings by time, value, parameter or sample number	Export Data: Export data in a variety of common formats, or switch to Excel $^{\circ}$ with a single click
Data Table: Instantly access tabular view for detailed dates, times, values, and annotations	Calibration: Automatically calculate and store calibration parameters
Scaling Options: Autoscale function fits data to the screen, or allows user to manually enter their own values	Logger Configuration: Easy set up and launch of data loggers with immediate or delayed start, preferred sample rate, and device ID
Formatting Options: Change colors, line styles, plotting options, show or hide channels quickly	Communications: Automatically sets up communications port, or lets user select configuration

*SPECIFICATIONS ARE SUBJECT TO CHANGE WITHOUT NOTICE. SPECIFIC WARRANTY AND REMEDY LIMITATIONS APPLY. CALL 1-603-456-2011 OR GO TO WWW.MADGETECH.COM FOR DETAILS.

ORDERING INFORMATION

Model	Description	Price (U.S.)
RFPULSE101A	Pulse Recorder and Wireless Transmitter	\$249.00
RFC101A	Software, manual, RS232 interface cable, wireless receiver and power supply	\$199.00
RFC200A	Software, manual, wireless receiver, power supply and USB interface cable	\$249.00
USB1	USB to RS232 converter	\$49.00
LTC-7PN	Replacement battery for RFPulse101A	\$10.00

ASK ABOUT OUR OTHER DATA RECORDERS

Temperature	Pulse/Event/State
Humidity	Low Level Current
Pressure	Low Level Voltage
pH	RF Transmitters
Level	Intrinsically Safe
Shock	Spectral Vibration
LCD Display	

For Quantity Discounts call 603-456-2011 or email sales@madgetech.com



DOC-1085009-00 REV G 2010.06.28