

Features

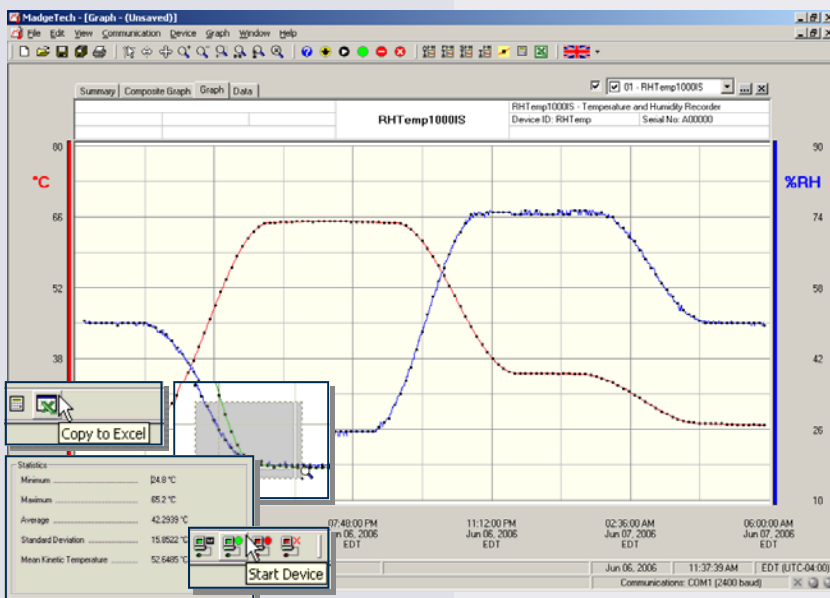
- Intrinsically safe
- Rugged
- Reusable
- Programmable start time
- Real-time operation
- Automatic dew point & vapor concentration calculations
- N.I.S.T. traceable
- User-friendly
- Low cost
- CE compliant



Applications

- EtO Sterilization
- Implement HACCP programs
- Food preparation and processing
- Environmental studies
- Warehouse monitoring
- Hazardous and hostile environment monitoring
- Medical and Pharmaceutical

The RHTEMP1000IS a rugged, battery powered, stand alone device used to record humidity and temperature. This all in one compact, portable, easy to use device is able to measure and record up to 21,845 humidity and temperature measurements. The RHTEMP1000IS is Factory Mutual certified as Intrinsically safe for Class I, Division 1, groups A, B, C and D and non-incendive for Class I, Division 2 groups A, B, C and D hazardous environments. This certification makes the device ideal for EtO sterilization, environmental studies and numerous other hostile environment applications. Its real time clock ensures that the data is time and date stamped. The storage medium is non-volatile solid state memory, providing maximum data security even if the battery becomes discharged. The RHTEMP1000IS can be started and stopped directly from a computer. The device makes data retrieval quick and easy. Simply plug the device into an empty COM or USB port and our user-friendly software does the rest.



MadgeTech Data Recorder Software

Reports humidity and temperature data in an easy to use graph.

The Windows®-based software package allows the user to effortlessly collect, display and analyze data. A variety of powerful tools allow you to examine, export, and print professional looking data with just a click of the mouse.

Click [MadgeTech Software](#) for more information or to download the software.

RHTEMP1000IS SPECIFICATIONS*

Temperature Sensor: Semiconductor	Reading Rate: 1 reading every 2 seconds to 1 every 12 hours
Temperature Range: -40 to +80°C	Calibration: Digital calibration through software
Temperature Resolution: 0.1°C	Calibration Date: Automatically recorded within device
Calibrated Accuracy: ±0.5°C (0 to +50°C)	Battery Type: 3.6V lithium battery included, user replaceable
Humidity Sensor: Semiconductor	Battery Life: 1 year typical at 25°C, 1 minute reading intervals
Humidity Range: 0 to 100%RH	Data Format: Date and time stamped °C, °F, K, °R ; %RH, mg/ml water vapor concentration
Humidity Resolution: 0.5%RH	Time Accuracy: ±1 minute/month at 20°C (RS232 port not in use)
Calibrated Accuracy: ±3%RH (±2%RH typical at 25°C)	Computer Interface: PC serial or USB (interface cable required); 2400 baud
Specified Accuracy Range: +10 to +40°C, 10 to 80%RH	Software: XP SP3/Vista/Windows 7
Response Time: 90% change in 60 seconds in slow moving air (end cap fully open)	Operating Environment: -40 to +80°C, 0 to 100%RH (case properly sealed) 1 PSIA to 60 PSIA
Start Modes: Software programmable immediate start or delay start up to six months in advance	Dimensions: 5.4" x 1.0" dia. (138mm x 26mm dia.)
Real Time Recording: May be used with PC to monitor and record data in real time (PC interface not IS rated)	Weight (Aluminum) : 5 oz (145 g)
Memory: 21,845 readings per channel; 43,690 total readings	Weight (Stainless) : 10 oz (285 g)
	Approvals: CE, Approved for carriage on Delta® mainline flights

BATTERY WARNING: RISK OF FIRE OR EXPLOSION. DO NOT RECHARGE, FORCE OPEN, HEAT OR DISPOSE OF IN FIRE.

SOFTWARE FEATURES

Multiple Graphs: Simultaneously analyze data from several units or deployments; easily switch to a single data series	Statistics: Calculate averages, min, max, standard deviation, and mean kinetic temperature with the touch of a button
Graphical Cursor: One click displays readings by time, value, parameter or sample number	Export Data: Export data in a variety of common formats, or switch to Excel® with a single click
Data Table: Instantly access tabular view for detailed dates, times, values, and annotations	Calibration: Automatically calculate and store calibration parameters
Scaling Options: Autoscale function fits data to the screen, or allows user to manually enter their own values	Logger Configuration: Easy set up and launch of data loggers with immediate or delayed start, preferred sample rate, and device ID
Formatting Options: Change colors, line styles, plotting options, show or hide channels quickly	Communications: Automatically sets up communications port, or lets user select configuration

*SPECIFICATIONS ARE SUBJECT TO CHANGE WITHOUT NOTICE. SPECIFIC WARRANTY AND REMEDY LIMITATIONS APPLY. CALL 1-603-456-2011 OR GO TO WWW.MADGETECH.COM FOR DETAILS.

ORDERING INFORMATION

Model	Description	Price (U.S.)
RHTEMP1000IS	Intrinsically Safe Humidity and Temperature Recorder in aluminum enclosure	\$399.00
RHTEMP1000IS-SS	Intrinsically Safe Humidity and Temperature Recorder in stainless steel enclosure	\$449.00
IFC110	Software, manual and RS232 interface cable	\$ 99.00
IFC200	Software, manual and USB interface cable	\$119.00
NIST	N.I.S.T. Calibration Certificate	Call for Pricing
TL-2150	Replacement battery for RHTemp1000IS	\$ 10.00
SVP-Secure	Protocols for validating the 21 CFR Part 11 ready, secure data logging system	\$600.00
SVP-Secure License	License for MadgeTech SVP-Secure Software (unlimited users, license per computer)	\$1000.00

ASK ABOUT OUR OTHER DATA RECORDERS

Temperature	Pulse/Event/State
Humidity	Low Level Current
Pressure	Low Level Voltage
pH	RF Transmitters
Level	Intrinsically Safe
Shock	Spectral Vibration
LCD Display	



For Quantity Discounts call 603-456-2011 or email sales@madgetech.com

DOC-1121009-00 REV H 2010.09.17