

# TEMP1000IS

## INTRINSICALLY SAFE TEMPERATURE DATA LOGGER

### Features

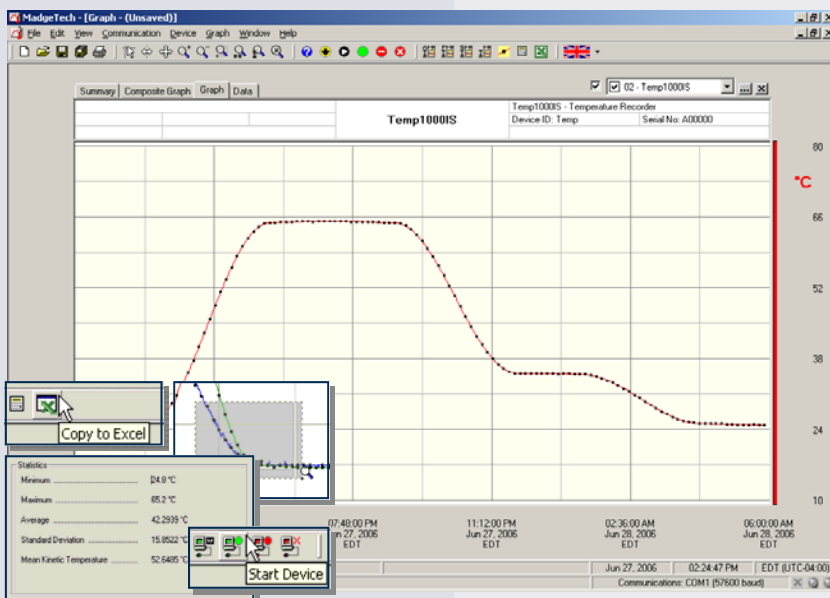
- Intrinsically safe
- Rugged
- Reusable
- Programmable start time
- Real-time operation
- N.I.S.T. traceable
- User-friendly
- Low cost
- NEMA 4X, 6P
- CE compliant



### Applications

- EtO sterilization
- Implement HACCP Programs
- Food preparation and processing
- Environmental studies
- Well monitoring
- Dishwasher testing
- Hazardous and hostile environment monitoring
- Medical and Pharmaceutical

The Temp1000IS temperature logger is a rugged, submersible (NEMA 6P), battery powered, stand alone device which can be used to automatically record temperatures between -40 and 80°C. This all in one compact, portable, easy to use device is able to measure and record up to 32,767 temperature measurements. The Temp1000IS has been Factory Mutual certified as intrinsically safe for Class I, Division 1, groups A, B, C and D and non-incendive for Class I, Division 2 groups A, B, C and D hazardous environments. This certification makes the device ideal for uses such as EtO sterilization, environmental studies and numerous other hostile environment applications. Its real time clock ensures that all the data is time and date stamped. The storage medium is non-volatile solid state memory, providing maximum data security even if the battery becomes discharged. The device can be started and stopped directly from your computer and its small size allows it to fit almost anywhere. The Temp1000IS makes data retrieval quick and easy. Simply plug the device into an empty COM and USB port and our user-friendly software does the rest.



### Temp1000IS Data Recorder

MadgeTech's Data Recorder Software is an easy to use Windows®-based software package that allows the user to effortlessly collect, display and analyze data. A variety of powerful tools allow you to examine, export, and print professional looking data with just a click of the mouse.

For more information about MadgeTech Recorders or to demo our software, visit us online at: [www.madgetech.com](http://www.madgetech.com)

## TEMP1000IS SPECIFICATIONS\*

<b>Temperature Sensor:</b> Semiconductor	<b>Calibration:</b> Digital calibration through software
<b>Temperature Range:</b> -40 to +80°C	<b>Calibration Date:</b> Automatically recorded within device
<b>Temperature Resolution:</b> 0.1°C	<b>Battery Type:</b> 3.6V lithium battery included, <b>user replaceable</b>
<b>Calibrated Accuracy:</b> ±0.5°C (0 to +50°C)	<b>Battery Life:</b> 1 year typical at 25°C, 1 minute reading intervals
<b>Memory:</b> 32,767 readings	<b>Data Format:</b> Date and time stamped °C, °F, K, °R
<b>Start Modes:</b> Software programmable immediate start or delay start, up to six months in advance	<b>Time Accuracy:</b> ±1 minute/month at 20°C (RS232 port not in use)
<b>Real Time Recording:</b> May be used with PC to monitor and record data in real-time (PC interface not IS rated)	<b>Computer Interface:</b> PC serial or USB (interface cable required); 2,400 baud
<b>Reading Rate:</b> 1 reading every 2 seconds to 1 every 12 hours	<b>Software:</b> XP SP3/Vista/Windows 7
<b>Lethality Equations:</b> Sterilization Units and Pasteurization Units are available in software with the click of a button.	<b>Operating Environment:</b> -40 to +80°C, 0 to 100%RH (case properly sealed)
	<b>Dimensions:</b> 4.3" X 1.0" dia.(110mm x 26mm dia.)
	<b>Weight (Aluminum) :</b> 4 oz (110 g)
	<b>Weight (Stainless) :</b> 8 oz (230 g)
	<b>Approvals:</b> IS, CE, Approved for carriage on Delta® mainline flights

**BATTERY WARNING:** RISK OF FIRE OR EXPLOSION. DO NOT RECHARGE, FORCE OPEN, HEAT OR DISPOSE OF IN FIRE.

## SOFTWARE FEATURES

<b>Multiple Graphs:</b> Simultaneously analyze data from several units or deployments; easily switch to a single data series	<b>Statistics:</b> Calculate averages, min, max, standard deviation, and mean kinetic temperature with the touch of a button
<b>Real-Time Recording:</b> Collect and display data in real-time while continuing to log	<b>Export Data:</b> Export data in a variety of common formats, or switch to Excel® with a single click
<b>Graphical Cursor:</b> One click displays readings by time, value, parameter or sample number	<b>Calibration:</b> Automatically calculate and store calibration parameters
<b>Data Table:</b> Instantly access tabular view for detailed dates, times, values, and annotations	<b>Logger Configuration:</b> Easy set up and launch of data loggers with immediate or delayed start, preferred sample rate, and device ID
<b>Scaling Options:</b> Autoscale function fits data to the screen, or allows user to manually enter their own values	<b>Communications:</b> Automatically sets up communications port, or lets user select configuration
<b>Formatting Options:</b> Change colors, line styles, plotting options, show or hide channels quickly	<b>Printing:</b> Automatically print graphical or tabular data

\*SPECIFICATIONS ARE SUBJECT TO CHANGE WITHOUT NOTICE. SPECIFIC WARRANTY AND REMEDY LIMITATIONS APPLY. CALL 1-603-456-2011 OR GO TO WWW.MADGETECH.COM FOR DETAILS.

## ORDERING INFORMATION

Model	Description	Price (U.S.)
TEMP1000IS	Intrinsically Safe Temperature Recorder, aluminum enclosure	\$199.00
TEMP1000IS-SS	Intrinsically Safe Temperature Recorder, stainless steel enclosure	\$249.00
IFC110	Software, manual and RS232 interface cable	\$ 99.00
IFC200	Software, manual and USB interface cable	\$119.00
NIST	N.I.S.T. Calibration Certificate	Call for Pricing
TL-2150	Replacement battery for Temp1000IS	\$ 10.00
SVP-Secure	Protocols for validating the 21 CFR Part 11 ready, secure data logging system	\$600.00
SVP-Secure License	License for MadgeTech SVP-Secure Software (unlimited users, license per computer)	\$1000.00

### ASK ABOUT OUR OTHER DATA RECORDERS

Temperature	Pulse/Event/State
Humidity	Low Level Current
Pressure	Low Level Voltage
pH	RF Transmitters
Level	Intrinsically Safe
Shock	Spectral Vibration
LCD Display	



For Quantity Discounts call 603-456-2011 or email [sales@madgetech.com](mailto:sales@madgetech.com)

DOC-1122009-00 REV H 2010.09.17

879 Maple Street · Contoocook, NH 03229  
PO Box 50 · Warner, NH 03278 · Phone: (603) 456-2011 · Fax: (603) 456-2012