

### Features

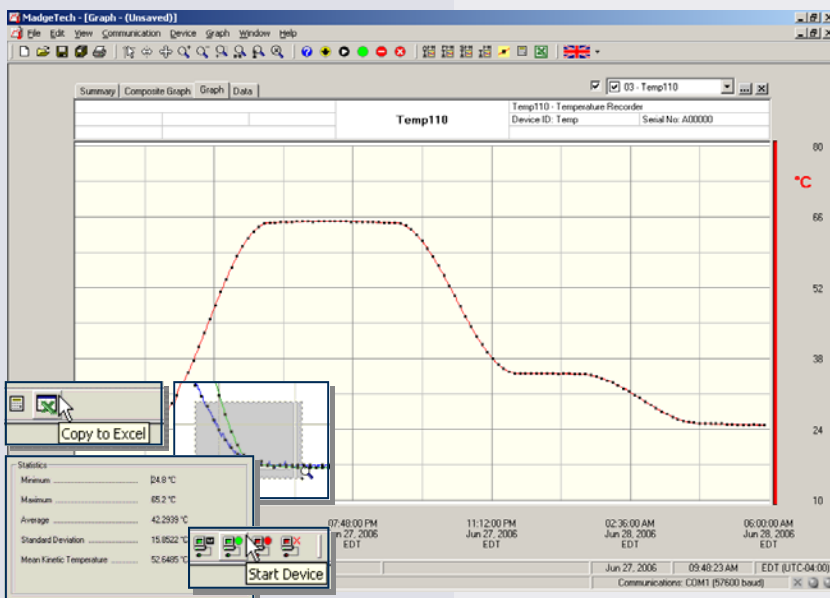
- 10 year battery life
- High speed download
- N.I.S.T. traceable
- Real-time operation
- Low cost
- Programmable start time
- Reusable
- Miniature size
- User-friendly
- CE compliant



### Applications

- Remote data logging
- Warehouse monitoring
- HVAC
- Medical and Pharmaceutical
- Museum monitoring
- Environmental studies
- Replace costly strip chart recorders
- Implement HACCP programs

The Temp110 is a miniature, battery powered, stand alone temperature recorder. The Temp110 features a real-time clock module that extends the battery life for up to 10 years and allows for high speed data downloads. This is an all-in-one compact, portable, easy to use device that will measure and record up to 32,767 measurements. The storage medium is non-volatile solid state memory, providing maximum data security even if the battery becomes discharged. Start and stop the device directly from your computer and its small size allows it to fit most anywhere. The Temp110 makes data retrieval quick and easy. Simply plug it into an empty COM or USB port and our user-friendly software does the rest.



### MadgeTech Data Recorder Software

displays temperature data in an easy to use graph.

The Windows®-based software package allows the user to effortlessly collect, display and analyze data. A variety of powerful tools allow you to examine, export, and print professional looking data with just a click of the mouse.

Click [MadgeTech Software](#) for more information or to download the software.

## TEMP110 SPECIFICATIONS\*

<b>Temperature Sensor:</b> Semiconductor	<b>Calibration:</b> Digital calibration through software
<b>Temperature Range:</b> -40 to +80°C	<b>Calibration Date:</b> Automatically recorded within device
<b>Temperature Resolution:</b> 0.1°C	<b>Battery Type:</b> 3.6V lithium battery included, <b>user replaceable</b>
<b>Calibrated Accuracy:</b> ±0.5°C (0 to +50°C)	<b>Battery Life:</b> 10 years (15 minute reading rate, 25°C)
<b>Start Modes:</b> Software programmable immediate start or delay start up to six months in advance	<b>Data Format:</b> Date and time stamped °C, °F, K, °R
<b>Real Time Recording:</b> May be used with PC to monitor and record data in real-time	<b>Time Accuracy:</b> ±1 minute/month (at 20 to 30°C)
<b>Memory:</b> 32,767 readings; software configurable memory wrap	<b>Computer Interface:</b> PC serial or USB (interface cable required); 57,600 baud
<b>Reading Rate:</b> 1 reading every 2 seconds to 1 every 12 hours	<b>Software:</b> XP SP3/Vista/Windows 7
	<b>Operating Environment:</b> -40 to +80°C, 0 to 95%RH non-condensing
	<b>Dimensions:</b> 1.7" x 2.3" x 0.8" (44mm x 59mm x 21mm)
	<b>Weight:</b> 1.1 oz (30 g)
	<b>Approvals:</b> CE, Approved for carriage on Delta® mainline flights

**BATTERY WARNING:** FIRE, EXPLOSION, AND SEVERE BURN HAZARD.  
DO NOT RECHARGE, DISASSEMBLE, HEAT ABOVE 212°F,  
INCINERATE OR EXPOSE CONTENTS TO WATER.

## SOFTWARE FEATURES

<b>Multiple Graphs:</b> Simultaneously analyze data from several units or deployments; easily switch to a single data series	<b>Statistics:</b> Calculate averages, min, max, standard deviation, and mean kinetic temperature with the touch of a button
<b>Real-Time Recording:</b> Collect and display data in real-time while continuing to log	<b>Export Data:</b> Export data in a variety of common formats, or switch to Excel® with a single click
<b>Graphical Cursor:</b> One click displays readings by time, value, parameter or sample number	<b>Calibration:</b> Automatically calculate and store calibration parameters
<b>Data Table:</b> Instantly access tabular view for detailed dates, times, values, and annotations	<b>Logger Configuration:</b> Easy set up and launch of data loggers with immediate or delayed start, preferred sample rate, and device ID
<b>Scaling Options:</b> Autoscale function fits data to the screen, or allows user to manually enter their own values	<b>Communications:</b> Automatically sets up communications port, or lets user select configuration
<b>Formatting Options:</b> Change colors, line styles, plotting options, show or hide channels quickly	<b>Printing:</b> Automatically print graphical or tabular data

\*SPECIFICATIONS ARE SUBJECT TO CHANGE WITHOUT NOTICE.  
SPECIFIC WARRANTY AND REMEDY LIMITATIONS APPLY.  
CALL 1-603-456-2011 OR GO TO WWW.MADGETECH.COM FOR DETAILS.

## ORDERING INFORMATION

<u>Model</u>	<u>Description</u>	<u>Price (U.S.)</u>
TEMP110	Temperature Recorder with 10 year battery	\$199.00
IFC110	Software, manual and RS232 interface cable	\$99.00
IFC200	Software, manual and USB interface cable	\$119.00
NIST	N.I.S.T. Calibration Certificate	Call for Pricing
LTC-7PN	Replacement battery for Temp110	\$10.00

For Quantity Discounts call 603-456-2011 or email [sales@madgetech.com](mailto:sales@madgetech.com)

### ASK ABOUT OUR OTHER DATA RECORDERS

Temperature	Pulse/Event/State
Humidity	Low Level Current
Pressure	Low Level Voltage
pH	RF Transmitters
Level	Intrinsically Safe
Shock	Spectral Vibration
LCD Display	

