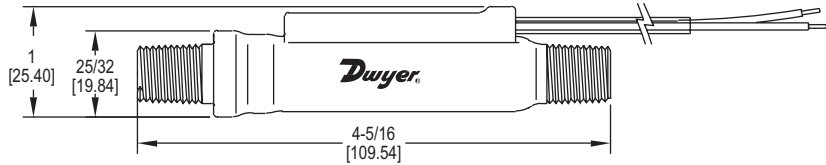
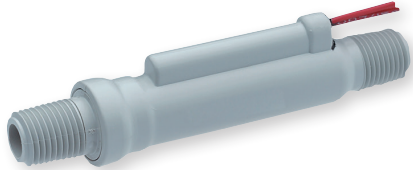


Dwyer

SERIES P2

# FLOW SWITCH

Ideal for Air and Post-Filtered Water Applications, Fixed Set Point, FDA Compliant



The **SERIES P2** Flow Switches utilize a piston-type design for both air and pure water applications. The switches have preset actuation points from 0.05 to 1.0 GPM for water and 25 CFH to 5 CFM for air. The P2 is comprised of PPE & PS (polyphenylene ether and polystyrene) housing and piston and 316 SS spring and stop pin.

## FEATURES/BENEFITS

- Piston design incorporates a hermetically sealed SPST magnetic reed switch
- All wetted parts are FDA compliant
- Economical design

## APPLICATIONS

- Pure water equipment
- Filter life monitoring
- Heat exchangers
- Cooling applications

## SPECIFICATIONS

**Service:** Compatible liquids or gases.  
**Wetted Materials:** Housing: PPE & PS (polyphenylene ether and polystyrene); Piston: PPE & PS and epoxy; Spring and stop pin: 316 SS.  
**Temperature Limits:** 0 to 212°F (-18 to 100°C).  
**Pressure Limits:** 150 psig (10.3 bar) @ 70°F (21°C); 50 psig (3.4 bar) @ 212°F (100°C).  
**Switch Type:** SPST, N.O.

**Electrical Rating:** .17 A @ 120 VAC, .08 A @ 240 VAC, .13 A @ 120 VDC, .06 A @ 240 VDC.  
**Electrical Connection:** 22 AWG, 18" (45.7 cm), PVC lead wires.  
**Process Connection:** 1/4" male NPT.  
**Mounting Orientation:** Any position. Set points shown are based on vertical, inlet down position.  
**Required Filtration:** 50 microns or better.  
**Weight:** 2 oz (.06 kg).

## MODEL CHART

Model	Media	Actuation Set Point	Model	Media	Actuation Set Point
P2-11	Liquids	.05 GPM (.19 LPM)	P2-15	Gases @ 5 psi	.42 CFM (11.9 LPM)
P2-12	Liquids	.25 GPM (.95 LPM)	P2-16	Gases @ 5 psi	1.0 CFM (28.3 LPM)
P2-13	Liquids	.50 GPM (1.89 LPM)	P2-17	Gases @ 5 psi	2.5 CFM (70.8 LPM)
P2-14	Liquids	1.0 GPM (3.79 LPM)	P2-18	Gases @ 5 psi	5.0 CFM (141.6 LPM)